



NOTICE OF PUBLIC MEETING

Public Works Committee/

Tom Rayome, Chairperson

Ryan Austin, Secretary

Dennis Polach

Mayor Blaser

Notice is hereby given of a meeting of the Public Works Committee to be held in the **Council Chambers** at City Hall, 444 West Grand Avenue, Wisconsin Rapids, at **5:00 p.m. on Thursday, February 8th, 2024**. The meeting will be streamed live on the City of Wisconsin Rapids Facebook page and will also be broadcast live on Charter Cable Channel 985 and Solarus HD Cable Channel 3. If a member of the public wishes to access this meeting live via Zoom audio conferencing, you must contact the City Clerk at least 24 hours prior to the start of the meeting to coordinate your access. This meeting is also available after its conclusion on the City's Facebook page and Community Media's YouTube page, which can be accessed at www.wr-cm.org. It is possible that members of the Committee may appear remotely via video or audioconferencing for this meeting.

Agenda

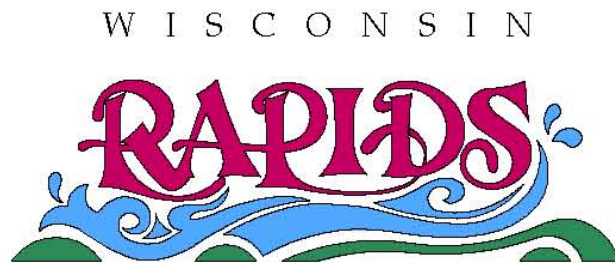
1. Call to order
2. Review Engineering & Street Department Monthly Activity Report
3. Review request from Melanie Minervini (1722 3rd St N) to review, revise and update Ch 27 Parking regarding parking meters and overnight parking 27.13(4)(e).
4. Review and consider proposals for the sale of raw, unscreened compost.
5. Review and consider setting fees for Contractor and Non-resident compost site passes.
6. Review bid results for the 2024 Asphalt Paving Contract and consider awarding the project to the low, qualified contractor.
7. Review bid results for the 2024 Concrete Contract and consider awarding the project to the low, qualified contractor.
8. Review and consider modifying the westbound traffic control at the intersection of Two Mile Ave and 1st St S to allow right turns without stopping.
9. Review and consider modifying the eastbound traffic control at the intersection of High St and 4th Ave N to allow right turns without stopping.
10. Review and consider proposals for hazardous material services related to the 2024 Lincoln Street project.
11. Discuss and consider Flashing Yellow Arrows at Washington St & STH 54 as well as 8th St and E Riverview Expressway.
12. Review Referral List
13. Set Next Meeting Date

14. Adjourn

Tom Rayome, Chairperson

> > > - < < <

The City of Wisconsin Rapids encourages participation from all its citizens. If participation at any public meeting is not possible due to a disability, notification to the city clerk's office at least 48 hours prior to the scheduled meeting is encouraged to make the necessary accommodations. Call the clerk at (715) 421-8200 to request accommodations.



PUBLIC WORKS DEPARTMENT

1411 CHASE STREET
WISCONSIN RAPIDS, WI 54495
(715) 421-8218 FAX (715) 421-8281

January 2024

Refuse and Recycling

- Garbage Collection estimate 391.75 tons, 379.51 tons in 2023
- Recycling Collection estimate 88.96 tons, 99.94 tons in 2023

Construction

Shorewood Terrace (1st Street North – Dead End)

- Project complete except for finish rake topsoil, seed and mulch

Apricot/ Broadway Street Intersection

Items to complete

- Sidewalk, Curb and Gutter on Apricot, Black dirt Apricot, finish rake topsoil, seed and mulch, Finish Grade and Pave Apricot

Lincoln Street (Peach Street – East Riverview Expressway)

- Removed trees to prepare for construction

Streets Maintenance

- Christmas Tree pickup
- Crushing blacktop at City Pit
- Finished clearing the Right of Way on 48th Street North in East Commerce
- Assisted Parks with Tree Care
- Assisted WWLC with water main break
- Preliminary investigation of a Manhole replacement on STH 34
- Took delivery of material's for 2024 Construction prior to price increase
- Hauled scrap metal to metal recycling
- Measured future Chip seal areas
- Cut brush and long grass around storm water pond areas, Two Mile and 16th ST, Norton Pond, Zoo Trail Pond
- Plowed a 2" snow event for Training
- Plowed a two-day snow event
- Cleaned up downtown on street parking areas and parking lots
- Winged back snow on highways and areas that drifted in, widened out sidewalks and bike trails
- Sanitary maintenance at 450 Dewey Street
- Maintained rail crossings and switches at East Commerce Center
- Scraped hardpack off streets when temperatures increased

- Reviewed construction plans
- Met with vendor on best trench box use for 21' deep manhole
- Removed snow from Islands on Highways
- Opened uncleared crosswalks around schools and churches
- Cold Patch City Streets
- Open catch basins that were not taking on water
- Swept downtown streets and highways that did not have snow banks
- Assisted with painting at the library
- Cutting brush in right of way on mowing routes
- Reviewed 2024 construction projects
-

Paint and Signs

- Started replacement of the Stop, Yield and regulatory signs that no longer meet the requirements of the MUTCD
- Repaired signs damaged in snow storm
- Provided temporary mailboxes for mailboxes damaged in storm

Shop and Repairs

- Routine service work fleet trucks
- Service Police and Fire's fleet
- Finished radiator repair on Construction roller
- Check over snow equipment after use during snow event
- Hard surface excavator buckets
- Replaced Hydraulic pump on garbage truck
- Inspected electric water pumps
- Inspected and repairing small engine tools
- Replaced turbo on 480 Volvo Excavator

Overtime that occurred in January 2024:

Snow and Ice Control:	\$18,567.31 for labor to plow and \$1,342.08 to maintain fleet during storm. Budgeted amount for 2024 season is \$121,815.00
Plowing Snow at Airport:	\$235.20 for labor to plow Airport. Non budgeted item, get reimbursed by the Airport
Garbage Collection:	\$436.95 for labor on Holidays and coverage on days off. Budgeted amount for 2024 season \$2242.00
Recycling Collection:	\$626.85 for labor on Holidays and coverage on days off. Budgeted amount for 2024 season \$1121.00
WWLC watermain breaks:	\$231.13 for labor to Assist WWLC with water breaks after hours. Non budgeted item, get reimbursed by WWLC



ENGINEERING DEPARTMENT
444 West Grand Avenue
Wisconsin Rapids, WI 54495-2780
 Engineering (715) 421-8205 FAX (715) 421-8291

ENGINEERING DEPARTMENT Monthly Activity Report

January 2024

Permits & Degradation

- 26 Permits/Licenses (25 last month) for asphalt paving (0), driveway grades/concrete pour inspections (0), storm water (0), excavating (9), Street Privilege (0), storm connection (0), permit parking (1), banner (0), environmental testing well (0), contractor licenses (16)
 - 2024 – 26 permits & licenses
 - 2023 – 278 permits & licenses
- 74 Diggers Locates for Storm Sewer & Sanitary Sewer (211 last month)
 - 11 Emergency locates (4 outside of normal business hours)
- Degradation fees this month = \$9,078.57
 - This year = \$9,078.57

Traffic

- Stop Sign / Yield Sign Requests
- Traffic Study
 - Study is complete for allowing right turn no stop for westbound traffic on Two Mile Ave at 1st St S.
 - Study is complete for allowing right turn no stop for eastbound traffic on High St at 4th Ave N.
- Vision Issues – N/A
- ITS Standalone Signal Grant
 - 2023 Project @ Expy and W Grand Ave started on September 25th. Some punch list items are expected to occur the week of February 5th when the new controller will be installed. The green left turn arrow detection will be looked at then.
 - 2024 Project @ Expy and High St and Expy and Chase St – grant was approved and consultant will be updating plans and rebidding in preparation for 2024 construction.
- Signal complaints
 - Flashing Yellow Arrows requested at Expressway and Plover Rd and Plover Rd and Washington St. (January 2024)
- Signal Equipment
 - Spare cabinet is ordered and is expected to arrive week of February 5th.

Project Designs/Construction underway:



2024 Projects

- Contracts
 - Concrete Contract (bid opening 2/8/24)
 - Asphalt Paving Contract (bid opening 2/8/24)
- Design
 - 9th St S (Peach St to Chestnut St) – 99%
 - Sewer and Water Permit Applications have been submitted
 - Lincoln St (Expressway to Peach St) – 85%
 - Construction notification letters went out this week
 - A project walk-thru is scheduled for March 26th
 - Offer letters are being finalized.
 - Wylie St (8th St N to 12th St N) – 90%
 - Sewer Manhole Connecting to Rudolph's Force Main – 99%
 - Dixon Parking Lot – 90%
- Bidding Projects
 - Bridge Lighting – data gathering
 - Library alternative ADA entrance – data gathering
- 2025 Projects
 - Preliminary Survey for 2024 and 2025 Projects
 - 14th Ave N (W Grand Ave to Fremont St) – 100%
 - McKinley St (8th Ave to 14th Ave) – 100%
 - E Jackson St (Jackson St Bridge to E Grand Ave) – 100%
 - Mead Field Pickle Ball Courts – 100%
 - Design for future Projects
 - 14th Ave N (W Grand Ave to Fremont St) – 50%
 - McKinley St (8th Ave N to 14th Ave N) – 50%
 - E Jackson St – 0%
 - Mead Field Pickle Ball Courts – pending

Projects Involving Grants

- 8th St S and Wood Ave - Highway safety Improvement Grant (HSIP).
 - Strand was awarded the project 12/20/23 and is pending a successful contract negotiation with the DOT.
 - Request for Qualifications were sent out on 11/17/23 with a due date of 12/8/23.
 - Design will commence in 2024 with construction proposed in 2025
- 8th St S – Lakewood Ln to Whitrock Ave – DOT is working on selecting a design consultant to begin designing this project.



ENGINEERING DEPARTMENT
444 West Grand Avenue
Wisconsin Rapids, WI 54495-2780
Engineering (715) 421-8205 FAX (715) 421-8291

- Rail Notification – Predictive Mobility Project
 - Project is on hold until the federal government and state government authorize additional funding.

Transportation Utility – 32 account updates in January 2024.

Storm Water Utility – 8 utility updates in January 2024.

- One Mile Cr.
 - Project Update letters will be sent out soon to adjacent property owners notifying them of the status of the project.
 - All easements for the project are now secured.
 - Dredging Permit – Hazardous material discharge permit is ready for approval. The Ch. 30 Permit is continuing to move forward; however, two comments were provided back which appear to be permit conditions once approved:
 - To avoid greatest impacts to amphibians/reptiles, a slow drawdown is required starting in late summer (mid-August) and ending in mid-September. Late summer to early fall drawdowns are preferred.
 - Fisheries also has a window of time from *mid-March to mid-May* where work needs to be avoided.
 - Dam Permit – DNR is reassigning the review of this permit to another staff member as of 12/2/23. The new reviewer has reached out (as of 1/12/24) with some initial questions and responses are being provided.

Other Highlights

- Reviewed and provided comments for the Road Facility and Sewer Utility for the WI DOT's plans to repave STH 73 from Industrial St toward the west. Project is scheduled for fall of 2024 or spring of 2025.



Public Works Committee

Date of Request: 1/30/2024

Requestor: Joe Eichsteadt, City Engineer

Request/Referral: Review request from Melanie Minervini (1722 3rd St N) to review, revise and update Ch 27 Parking regarding parking meters and overnight parking 27.13(4)(e).

Background information:

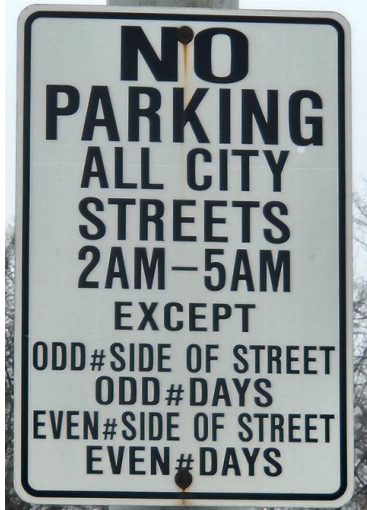
A copy of the ordinance is included with this referral.

- Sections highlighted in yellow pertain to parking meters.
- Sections highlighted in orange pertain to overnight parking.

The current overnight parking ordinance was approved by Council in 2008.

"Night parking restrictions. When signs have been erected at, or reasonably near, the corporate limits, alternate side parking will be allowed from 2:00 a.m. until 5:00 a.m. on all streets in the City of Wisconsin Rapids unless otherwise posted or exempted by this ordinance. On even-numbered calendar days, all vehicles shall be parked on the even-numbered side of the street. On odd-numbered calendar days, all vehicles will be parking on the odd-numbered side of the street. No person shall park, stop, or leave standing any vehicle in violation of this subsection. In the even of an emergency police order or snow emergency designated by the public works director, chief of police, or their designee(s), alternate side parking shall be suspended. (MC#1074)"

Existing Signage





There are currently 12 signs installed at/near the corporate limits.

Street Ahead	Street Behind	Comments	Street
High St	Wilson St		STH 34
Wilson St	5th Ave N		STH 34
HURLEY ST	SENECA RD	OVERNIGHT PARKING RESTRICTI...	2ND AVE S
1ST ST S	RIVER BIRCH LN	OVERNIGHT PARKING RESTRICTI...	PEPPER AVE
INDUSTRIAL ST	CONDO DR	OVERNIGHT PARKING RESTRICTI...	STH 13 N
TWO MILE AVE	WHITROCK AVE		8TH ST S
KINGSTON RD	26TH ST N		STH 54 E
Snyder St	STH 54 E		CHESTNUT ST
26TH AVE S	GEORGE RD		W GRAND AVE
Shorewood Terrace	Strawberry Ln		1st St N
Woodland Dr	Two Mile Ave		Sampson St
17th Ave N	Brickyard Rd		County Highway F

It is estimated that there are a total of 36 streets entering the corporate limits. This would require adding 24 more signs.

Sign costs - 24x36 sign would cost \$100.00, 24x48 sign would cost \$115.00. Installation would cost \$50.00 - \$150.00 depending on if we needed to install a post or not. Signs could be added at all streets entering the city limits for under \$10,000 (under \$5,000 for materials).

Options available:

- 1) Regarding parking meters and general ordinance updates – This is not time sensitive but proposed language can be developed and brought back to committee.
- 2) Regarding overnight parking we can add an example in the ordinance and add additional signage at the corporate limits.

Action you are requesting the committee take: TBD

How will the item be financed? TBD

- 27.01 Definitions
- 27.02 Coins to be Deposited
- 27.03 Hours of Operation of Meters
- 27.04 Presumptive Violation
- 27.05 Violations
- 27.06 Duty of Police Department
- 27.07 Displaying Violation Tickets
- 27.08 Public Works Department to Install Meters
- 27.09 Collection of Parking Meter Revenue
- 27.10 Use of Parking Meter Revenue
- 27.11 Downtown Limited Time Parking
- 27.12 Parking by Permit
- 27.13 Parking Regulations
- 27.14 Handicapped and Physically Disabled Parking Regulations
- 27.15 Unlawful Removal of Parking Citations
- 27.16 Removal of Illegally Parked Vehicles
- 27.17 Penalties for Meter Violations
- 27.18 Penalties for Parking Violations
- 27.19 Parking Citations

27.01 DEFINITIONS (AS USED IN THIS SECTION)

- (1) **Parking Meter:** means any mechanical device or meter placed or erected for regulation of parking and designed to accept coins of the United States Mint in payment for parking privileges, equipped with a timing device which registers on a visible face or dial the amount of time purchased.
- (2) **Parking Meter Space:** means a space officially designated for vehicular parking indicated by painted lines or other markings or dividers, adjacent to which a parking meter is installed.
- (3) **East Side Downtown Area:** means that portion of the city on the east side of the Wisconsin River bounded by and including Maple Street extended from the river to 3rd Street South; 3rd Street South and North from Maple Street to Jackson and Market Streets; Market Street from Jackson Street to Baker Street; and Baker Street extended from Market Street to the river.
- (4) **West Side Downtown Area:** means that portion of the city on the west side of the Wisconsin River bounded by Goggins Street extended from the river to 3rd Avenue South; 3rd Avenue South from Goggins Street to Johnson Street; Johnson Street from 3rd Avenue South to 4th Avenue South; 4th Avenue South from Johnson Street to West Grand Avenue; West Grand Avenue from 4th Avenue to West Jackson Street and 6th Avenue North; 6th Avenue North from West Grand Avenue to McKinley Street; McKinley Street from 6th Avenue North to 4th Avenue North; 4th Avenue North from McKinley Street to West Jackson Street; and West Jackson Street to the river.

27.02 COINS TO BE DEPOSITED IN METERS.

No person shall stop, stand, or park any vehicle in a parking meter space unless the timing mechanism on the adjacent parking meter has been activated by the deposit of proper coins in accordance with directions appearing on the meter. Failure to deposit the proper coin to set the timing mechanism in operation when so required is a violation of this code.

27.03 HOURS OF OPERATION OF METERS

- (1) **The hours of operation of the parking meters are the following except for legal holidays:**
 - (a) **9:00 a.m. to 5:00 p.m., Monday through Friday**

- (2) The hours of operation are made exempt when authorized by the Common Council except as stated below.
 - (a) Funerals
 - (b) Construction projects.
 - (c) On adjacent property when pre-payment for metered spaces has been received at the rate of \$2.50 per meter stall per day.
 - (d) On- and off-street parking meter stalls at a rate of \$1.00 per week per bag to cover the meters.
 - (e) Official municipal/county/state business, with an official city business card signed by the chief of police and displayed on the vehicle.
 - (f) Conventions and other official business with an official courtesy parking permit displayed on the vehicle.
 - (g) Temporary parking permits issued with a prepayment for metered spaces has been received at the rate of \$2.50 per meter stall per day. Temporary parking permits are not valid in one-hour time limit zones.

27.04 PRESUMPTIVE VIOLATION

The fact that the timing device on any parking meter is not in operation and the mechanical indicator registered "EXPIRED" or "VIOLATION" shall be presumptive evidence that the owner or driver of the vehicle then parked in the space regulated by such parking meter failed to deposit or cause to be deposited the required coin or coins.

27.05 VIOLATIONS

- It shall be unlawful, and a violation of this ordinance, for any person to:
- (1) Cause, allow, permit, or suffer any vehicle registered in the name of, or operated by such person, to be parked overtime, or beyond the period of legal parking time established for any parking space or any parking meter as shown on the meter or to deposit in any parking meter any coin for the purpose of parking beyond the maximum legal parking time for the particular parking meter zone. The parking time that any car shall occupy a parking meter zone cannot be further extended by an operator by further deposits of coins or by allowing a parking ticket to remain on the car and parked vehicles shall be removed promptly by the operator on the expiration of the parking period as provided for by this ordinance of the City of Wisconsin Rapids regulating parking.
 - (2) Permit any vehicle to remain or be placed in any parking space adjacent to any parking meter while said meter is displaying a signal indicating that the vehicle occupying such parking space has already been parking beyond the period prescribed for such parking space.
 - (3) To park any vehicle across any line or marking of a parking space or in such position that the vehicle shall not be entirely within the area designated by such lines or markings. When a parking space in any parking meter zone is parallel with adjacent curb and sidewalk, any vehicle parking in such parking space shall be parked so that the foremost part of such vehicle shall be along side of and next to the parking meter. When a parking space in any parking meter zone is diagonal or perpendicular to the curb or sidewalk, any vehicle parked in such parking space shall be parked with the foremost part of such vehicle directed at the next such meter.

There shall be no diagonal or perpendicular parking of trucks, the overall length is more than 18 feet on streets in the City of Wisconsin Rapids.
 - (4) To deface, injure, tamper with, open, or willfully break, destroy, or impair the usefulness of any parking meter installed under the provisions of this section.
 - (5) To deposit or cause to be deposited in any parking meter, any slug, device, or thing whatsoever other than the coin or coins of the United States of America.

27.06 DUTY OF POLICE DEPARTMENT

- (1) It shall be the duty of the department of police, under the direction of the City Council, to keep account of all violations of this chapter.
- (2) It shall keep an account of an report the number of each parking meter which indicates that the vehicle occupying the parking space adjacent to such parking meter is or has been parked in violation of any of the provisions of this chapter, the date and hour of such violation, to make and to state license number of such vehicle, and any other facts which are necessary to a thorough understanding of the circumstances attending such violation.
- (3) The officer or meter attendant shall attach to such vehicle a notice stating that it has been parked in violation of this chapter, and instructing the owner or operator to report to the department of police in regard to such violation.

27.07 DISPLAYING VIOLATION TICKETS

It shall be unlawful for any person to remove a motor vehicle, upon which a parking meter violation has been placed, from one parking space to another parking space without first removing the parking violation ticket thereon, or to display on a motor vehicle parking with a parking space a parking meter violation ticket from a previous period, or to remove a parking meter violation ticket from one vehicle and place it upon another, different vehicle.

27.08 PUBLIC WORKS DEPARTMENT TO INSTALL METERS

The public works department shall procure, install, and maintain parking meters and mark off individual parking spaces in the parking zones designated in Section 27.01 and 27.02 and in such other zones as may be hereafter established by the Common Council.

27.09 COLLECTION OF PARKING METER REVENUE

It shall be the duty of the department of police to designate some person(s) to make regular collections of the money deposited in said parking meters, and deliver the money to the city treasurer, and it shall be the duty of the city treasurer to count the money and place it in a special fund to be known as the "parking meter fund", which fund shall be used exclusively for the purposes specified in Section 27.13. Such person(s) making such collections shall be bonded in the sum of \$1,000.00 to insure the faithful performance of his/her/their duties.

27.10 USE OF PARKING METER REVENUE

Parking meter revenues will be used as determined by the Common Council in its yearly budget.

27.11 DOWNTOWN LIMITED TIME PARKING

No person shall park, stop, or leave standing any vehicle, whether attended or unattended, for more than two hours from 9 a.m. to 5 p.m., Monday through Friday, in the East Side Downtown Area or West Side Downtown Area, except in areas designated for permit parking where vehicles displaying proper permits may park for periods of longer than two hours and except as may otherwise be designated in this chapter.

27.12 PARKING BY PERMIT

Parking by Permit. Persons whose vehicles display an appropriate permit issued by the city engineer or his designee shall be entitled to park beyond the usual two-hour limit, subject to the restrictions provided herein, in the following designated places in the East Side Downtown Area and West Side Downtown Area.

- (1) Areas where permit parking is allowed are:
 - (a) the city-owned parking area lying between 3rd Avenue and 4th Avenue and north of West Grand Avenue (Dixon Lot, Lot W-2), however the seven parking spaces facing West Grand Avenue shall be two-hour parking and not permit parking.
 - (b) the city-owned parking lot at the southwest corner of 3rd Street North and East Jackson Street from. (Lot E-2)
 - (c) in the city-owned lot located on the south side of East Jackson Street adjacent to the north/south alley between Oak Street and East Jackson Street, the 5 spaces in the southern-most row.
 - (d) the first five (5) spaces south of West Grand Avenue on the west side of 1st Avenue South between West Grand Avenue and Johnson Street.
 - (e) the west side of 1st Street North between East Jackson Street and Baker Street.
- (2) The permit will be a yearly permit, issued on an annual basis; however, the City may decide at any time to cease permit parking at any location, and permittees will be refunded fees on a prorated basis. The fee shall be \$156.00, for space rental, plus a \$4.00 charge for the decal, per year. Subject to earlier termination by the City, the permit will be in effect for one year, beginning September 1 of each year.
- (3) Permit parking as designated above shall be from 7:00 a.m. to 5:00 p.m.
- (4) The Department of Public Works shall maintain policies and application materials consistent with this ordinance which address how spaces are allocated as well as other administrative matters.

27.13 PARKING REGULATIONS

- (1) No Parking.
- (a) Parking Prohibited at all Times
- (1) Streets beginning with the letter "A":
- (a) Airport Avenue, both sides, from 100 feet east of 8th Street South to 100 feet west of 8th Street South (MC#565)
 - (b) Alton Street, the north side, from 16th Avenue South to 17th Avenue South (MC#1035)
 - (c) Apple Street, both sides, from 8th Street South to 100 feet west of 8th Street South (MC#488)
 - (d) Apple Street, the south side, from the west line of 6th Street South to 100 feet east of 6th Street South
 - (e) Avon Street, the north side, from 34 feet west of 5th Street North to 126 feet east of 5th Street North
 - (f) Avon Street, the north side, from 120 feet east of Market Street to 184 feet east of Market Street
 - (g) Avon Street, the south side, from Market Street to 5th Street North
- (2) Streets beginning with the letter "B":
- (a) Badger Avenue, both sides, west end, west of Lincoln Street
 - (b) Baker Street, both sides, from 75' west of 8th Street North to 17th Street North (MC#1181) (MC1355)
 - (d) (MC#1181) REPEALED (MC#1304)
 - (f) Birch Street, the north side, from 140 feet east of Garfield Street to Lincoln Street
 - (g) Birch Street, the south side, from Garfield Street to Lincoln Street
 - (h) Birch Street, both sides, from 2nd Street South to Garfield Street
 - (i) Broadway Street, the west side, from Plover Street to 350 feet north (MC#373)
 - (j) Brown Street, the south side, from 1140 feet west of 17th Avenue to 1260 feet west of 17th Avenue (MC#940)
 - (k) Burt Street, from 6th Street South to 120 feet east of 6th Street South (MC#959)
- (3) Streets beginning with the letter "C":
- (a) Chase Street, the north side, from 10th Avenue South to 50 feet west of 12th Avenue South
 - (b) Chase Street, the north side, from 3rd Avenue South to 7th Avenue South
 - (c) Chase Street, the south side, from 155 feet west of West Riverview Expressway to 50 feet west of 12th Avenue South
 - (d) Chestnut Street, both side, from 50 feet east of 12th Street South to 50 feet west of 12th Street South (MC#611)
 - (e) Chestnut Street, both sides, from 50 feet east of Hill Street to 50 feet west of Hill Street (MC#998) (MC#1304)
 - (f) Chestnut Street, the north side, from 3rd Street South to Garfield Street
 - (g) Chestnut Street, the south side, from 8th Street South to 9th Street South
 - (h) Chestnut Street, the south side, from 180 feet west of 8th Street South to 8th Street South
 - (i) Chestnut Street, the south side, from 276 feet west of Hill Street south to 345 feet west of Hill Street, which is 20' either side of the driveway into 440 Chestnut Street (MC#1060)
 - (j) (MC#1099) (MC#1304)
 - (k) Clyde Avenue, both sides, from 16th Street South to 50 feet west of 16th Street South (MC#532)
- (4) Streets beginning with the letter "D":
- (a) D Street, the cul-de-sac (MC#390)
 - (b) Dale Street, the north end, in the cul-de-sac (MC#1108)
 - (c) Daly Avenue, the north side, from 9th Street South to 10th Street South (MC#1304)
 - (d) Daly Avenue, the south side, from 9th Street South to 10th Street South
 - (e) Dewey Street, both sides, from 8th Street South to 50 feet west of 8th Street South (MC#970) (MC#1304)
 - (f)

- (g) Dewey Street, the south side, from 3rd Street to 430' east of 4th Street (~~MC#757~~) (MC#1160)
 - (h) Dewey Street, the south side, from 40' west of Garfield Street to 25' east of Garfield Street (MC#802)
 - (i) Dewey Street, the south side, from 8th Street South to 9th Street South
 - (j) REPEALED (MC#1304)
 - (k) (MC#1060) REPEALED (MC#1304)
 - (l) REPEALED (MC31302)
- (5) Streets beginning with the letter "E":
- (a) 8th Street North, both sides, from Wisconsin Street to Baker Street
 - (b) 8th Street North, the east side, from Oak Street to Saratoga Street
 - (c) 8th Street North, the west side, from Baker Street to 20 feet north of Baker Street (MC#465)
 - (d) (MC#944) REPEALED (MC#1304)
 - (e) East G Street, the south side, between 8th Street South and 350 feet west of 8th Street South, including the cul-de-sac at the end of the street (MC#956)
Engler Drive, both sides, from 25th Avenue South to 27th Avenue South from 7 a.m. to 4 p.m. on school days.
 - (f) East Grand Avenue, both sides, from 50 feet east of 3rd Street to the Grand Avenue Bridge
 - (g) (MC#1263) REPEALED (MC#1304)
 - (h) East Grand Avenue, the north side, from 6th Street South to 9th Street South (MC#1263)
 - (i) East Grand Avenue, the south side, from 3rd Street to 4th Street, between 8:00 am and 9:00 p.m. (MC#1263) REPEALED (MC#1304)
 - (j) Elm Street, the east side, from Birch Street to Maple Street
 - (k) REPEALED (MC#1304)
- (6) Streets beginning with the letter "F":
- (a) 1st Avenue South, the east side, from Johnson Street to 3rd Avenue South
 - (b) 1st Avenue South, from 2nd Avenue South to 3rd Avenue South (MC#893)
 - (c) REPEALED (MC#1304)
 - (d) (MC#897) (MC#1304)
 - (e) 1st Street North, the east side, from 25 feet south of Plover Street to Plover Street (MC#741)
 - (f) 1st Street North, both sides, between Baker Street and Drake Street (MC#1225)
 - (g) 1st Street North, the east side, from LaVigne Street to Spring Street
 - (h) 1st Street North, the east side, from East Jackson to Market Street (MC#419)
 - (i) 1st Street South, both sides, from East Riverview Expressway to 50 feet south of Daly Avenue
 - (j) 1st Street South, the west side, from Pepper Avenue to 300 feet south of Clyde Avenue (MC#938)
 - (k) REPEALED (MC#1304)
 - (l) 4th Avenue North, the east side, from West Grand Avenue to 271 feet north of West Grand Avenue
 - (m) 4th Avenue South, the west side, from Johnson Street to 87 feet north of Johnson Street
 - (n) 4th Street, the east side, from 50 feet south of Birch Street to East Grand Avenue (MC#1184)
 - (o) 4th Street South, the west side, from Birch Street to Dewey Street (MC#1066)
 - (p) (MC#510) (MC#1304)
 - (q) 5th Street North, the west sides, from Avon to Baker Street (MC#398)
 - (r) 5th Street North, the west side, from 140 feet north of Avon Street to Avon Street
 - (s) 5th Street South, the east side, from Dewey Street to Chestnut Street
 - (t) 5th Street North, the cul-de-sac adjacent to East Jackson Street, south of Saratoga

- Street (MC#850)
- (u) REPEALED (MC#1304)
- (v) REPEALED (MC#1304)
- (w) (MC#850) (MC#1304)
- (x) 1st Street North, east side, between Spring Street and north corporate limits (MC#1225)
- (y) 1st Street North, west side, between Riverview Drive and north corporate limits (MC#1225)
- (7) Streets beginning with the letter "G":
 - (a) Gardner Street, both sides, from 3rd Avenue South to 8th Avenue South
 - (b) Garfield Street, the east side, from East Grand Avenue to Witter Street (MC#1096) (MC#1206)
 - (c) Gaynor Avenue, the south side, from 17th Avenue South to 25th Avenue South, except from the former railroad right-of-way to 400 feet west of 17th Avenue South. (MC#1181) (MC#1187) (MC#1206)
 - (d) Goggins Street, the south side, from 8th to 10th Avenue South (MC#326)
 - (e) Grape Street, the north side, from 8th Street South to 9th Street South
 - (f) Grove Avenue, both sides, from Lincoln Street to 65 feet west of Lincoln Street (MC#771)
 - (g) (MC1206) REPEALED (MC#1304)
- (8) Streets beginning with the letter "H":
 - (a) Hale Street, the north side, from West Riverview Expressway to 175 feet east of West Riverview Expressway
 - (b) Hale Street, the south side, from West Riverview Expressway to 100 feet east of West Riverview Expressway
 - (c) High Street, both sides, from 4th Avenue North to 7th Avenue North (MC#673)
 - (d) Hill Street, both sides, from 50 feet east of Chestnut Street to 50 feet west of Chestnut Street (MC#998)
 - (e) Huntington Avenue, both sides, from 16th Street South to 50 feet west of 16th Street South (MC#490)
 - (f) Huntington Avenue, the south side, from 10th Street South to 50 feet east of 10th Street South (MC#632)
 - (g) Huntington Avenue, the north side, from 66 feet west of 12th Street South to 257 feet west of 12th Street South (MC#1066)
 - (h) Hill Street, the east side, from Spruce Street to Dewey Street (MC#650)
 - (i) REPEALED (MC#1304)
- (9) Streets beginning with the letter "I":
- (10) Streets beginning with the letter "J":
 - (a) Johnson Street, the north side, from 3rd Avenue South to 4th Avenue South
 - (b) (MC#1109) (MC#1304)
 - (c) Johnson Street, the south side, from 3rd Avenue South to 53 feet west of 3rd Avenue South
- (11) Streets beginning with the letter "K":
 - (a) Kuhn Avenue, both sides, from 8th Street South to 420 feet east of 8th Street South (MC#902)
- (12) Streets beginning with the letter "L":
 - (a) REPEALED (MC#1304)
 - (b) REPLEALED (MC#1317)
 - (c) Lincoln Street, the east side, from Chestnut Street to 150 feet north of Witter Street
 - (d) Lincoln Street, the west side, from D Street to Chestnut Street
 - (e) Lincoln Street, both sides, from Dewey Street to 200 feet south of Daly Avenue
 - (f) Lincoln Street, the west side, from four feet north of the driveway at 1960 Lincoln Street to 115 feet south
 - (g) Lincoln Street, both sides, from East Grand Avenue to the Peach Street-Birch Street

- intersection
- (h) REPEALED (MC#1304)
 - (i) Lincoln Street, the west side, from 72 feet south of Witter Street to 200 feet north of Witter Street (MC#606)
 - (j) Lincoln Street, both sides, from Grove Avenue to 65 feet north of Grove Avenue (MC#771)
 - (k) Locust Street, both sides, from 2nd Street South to 3rd Street South
 - (l) Locust Street, the south side, from 3rd Street South to 4th Street South
 - (m) Love Street, north sides, from 1st Street North to 2nd Street North.(MC#1304)
- (13) Streets beginning with the letter "M":
- (a) Maple Manor Drive, the south side, from Lincoln Street to 100 feet west of 8th Street South (MC#438)
 - (b) Maple Street, the north side, from 2nd Street South to 3rd Street South
 - (c) Maple Street, the south side, from 2nd Street South to Garfield Street
 - (d) Market Street, the west side, from Jackson Street to Baker Street
 - (e) McKinley Street, the south side, from 4th Avenue North to 50 feet west of 4th Avenue North
 - (f) Mead Circle, the east side (MC#601)
 - (g) REPEALED (MC#1304)
 - (h) Miller Avenue, the south side, from Lincoln Street to 5th Street South (MC#598)
- (14) Streets beginning with the letter "N":
- (a) (MC#348) (MC#1304)
 - (b) 9th Street South, the east side, from Grove Avenue to 190 feet north of Sweet Avenue (MC#896)
 - (c) North Strawberry Lane cul-de-sac
- (15) Streets beginning with the letter "O":
- (a) Oak Street, the north side, from Jackson Street to 6th Street
 - (b) Oak Street, the south side, from Jackson Street to 7th Street
 - (c) Oak Street, the south side, from 2nd Street to 3rd Street
 - (d) Oak Street, the north side, from 3rd Street to 4th Street (MC#1184)
- (16) Streets beginning with the letter "P":
- (a) Peach Street, both sides, from 6th Street South to 7th Street South
 - (b) Peach Street, the south side, from Lincoln Street to 66 feet east of Lincoln Street (MC#419)
 - (c) Pepper Avenue, both sides, from 8th Street South to 200 feet east of 8th Street South (MC#705)
 - (d) Pepper Avenue, the south side, from 8th Street South to 110 feet west of 8th Street South
 - (e) (MC#398) (MC#1304)
 - (f) Pepper Avenue, the north side, from 7th Street South to 8th Street South
 - (g) Pepper Avenue, the south side, from 50 feet west of 14th Street South to 50 feet east of 14th Street South (MC#771)
 - (h) Pine Street, both sides, from 2nd Street South to 3rd Street South (MC#1066)
 - (i) REPEALED (MC#1304)
 - (j) Prospect Street, the south side, from 8th Street North to ~~150~~ 50 feet east of 8th Street North (MC#1111)
 - (k) Prospect Street, the north side, from 39 feet west of 11th Street North to 53 feet west of 11th Street North (MC#938)
- (17) Streets beginning with the letter "Q":
- (18) Streets beginning with the letter "R":
- (a) (MC#589) (MC#1304)
- (19) Streets beginning with the letter "S":
- (a) 2nd Avenue South, both sides, from 1st Avenue South to 10th Avenue South
 - (b) 2nd Avenue South, both sides, from May Street to Moyer Street (MC#326)

- (c) 2nd Avenue South, both sides, from 1,000 feet south of Park Street to 200 feet north of West Riverview Expressway (MC#870)
- (d) 2nd Avenue South, the east side, from 200 feet north of Gaynor Avenue to 350 feet south of Gaynor Avenue
- (e) 2nd Avenue South, the west side, from 200 feet north of Gaynor Avenue to 1,000 feet south of Gaynor Avenue
- (f) 2nd Street North, the west side, from LaVigne Street to the Green Bay and Western Railroad property
- (g) 2nd Street North, the west side, from Oak Street to 227 feet north of Jackson Street
- (h) 2nd Street South, the east side, from East Grand Avenue to 50 feet south of East Grand Avenue(MC#1263)
- (i) 6th Avenue North, both sides, from West Grand Avenue to 130 feet north of West Grand Avenue (MC#551)
- (j) 6th Street cul-de-sac off of Oak Street (MC#479)
- (k) 6th Street South, the east side, from East Grand Avenue to Apple Street (MC#1263)
- (l) 6th Street South, the east side, from Dewey Street to 40 feet north of Dewey Street
- (m) 7th Avenue South, the east side, from Goggins Street to Hale Street (MC#436)
- (n) 7th Street North, the west side, from Saratoga Street 200 feet north of Baker Street (MC#479)
- 7th Street South, the east side, from East Grand Avenue to Peach Street (MC#1304)
- (o) 7th Street South, the east side, from East Grand Avenue to Oak Street (MC#342)
- (p) 7th Street South, the east side from Pepper Avenue to 100 feet south of Pepper Avenue (MC#1140)
- (q) 7th Street South, the east side, from Daly Avenue to Pepper Avenue-(MC#1137)
- (s) 16th Avenue North, from West Grand Avenue to 50 feet north of West Grand Avenue (MC#419)
- (t) 16th Street South, both sides, from 100 feet north of Chestnut Street to 100 feet south of Chestnut Street
- (u) 16th Street South, both sides, from 350 feet north of East Riverview Expressway to 300 feet south of East Riverview Expressway
- (v) 16th Street South, east side, from 300 feet south of East Riverview Expressway to 230 feet south of Pepper Avenue
- (w) 16th Street South, both sides, from Wisconsin Street to Baker Street
- (x) 16th Street South, the east side, from 140 feet north of Peach Street to 340 feet north of Peach Street
- (y) 16th Street South, the west side, from 50 feet north of Huntington Avenue to 50 feet south of Huntington Avenue (MC#490)
- (z) 16th Street South, the west side, from 50 feet north of Clyde Avenue to Clyde Avenue (MC#1013)
- (aa) REPEALED (MC#1304)
- (ab) REPEALED (MC#1304)
- (ac) Sherman Street, the south side, from 4th Street to Garfield Street (MC#953)
- (ad) Spencer Street, the north side, between 17th Avenue South and 100 feet west of 17th Avenue South (MC#817) (MC#953)
- (ae) Strawberry Lane, the north end and the south end, in the cul-de-sac (MC#1108)
- (pa) (MC#1263) (MC#1304)
- (20) Streets beginning with the letter "T":
 - (a) 3rd Avenue North, the west side, from 100 feet south of West Jackson Street to 375 feet north of West Jackson Street
 - (b) 3rd Avenue South, both sides, from south-bound 8th Avenue South to 1st Avenue South
 - (c) 3rd Avenue South, both sides, from 100 feet north of Johnson Street to 150 north of Chase Street (MC#436)
 - (d) 3rd Avenue South, the east side, from Johnson Street to 77 feet north of Johnson

Street

- (e) 3rd Avenue South, the west side, from 240 feet south of May Street to 310 feet south of May Street (MC#844)
- (f) REPEALED (MC#1304)
- (g) 3rd Street South, both sides, from East Grand Avenue to East Riverview Expressway (MC1338)
- (h) (MC#344) (MC#1304)
- (i) 10th Avenue, the east side, from West Grand Avenue to 50 feet north of West Grand Avenue (MC#861)
- (j) 12th Avenue North, both sides, north end of the street to the cul-de-sac
- (k) 12th Street South, the west side, from East Grand Avenue to 100 feet south of East Grand Avenue (MC#998)
- (l) 12th Street South, the east side, from 50 feet north of Chestnut Street to 50 feet south of Chestnut Street (MC#1276)
- (m) 12th Street South, the west side, from 21 feet south of Chestnut Street to 71 feet north of Chestnut Street (MC#930)
- (n) 12th Street South, the east side, from 64 feet north of East Riverview Expressway to 240 feet south of East Riverview Expressway
- (o) 12th Street South, the west side, from 150 feet north of the East Riverview Expressway to 240 feet south of East Riverview Expressway
- (p) (MC#347) (MC#1304)
- (q) 23rd Avenue South, the west side, from 43 feet south of Wickham Avenue to 83 feet south of Wickham Avenue (MC#921)
- (r) 24th Street South, the west side, from 140' south of Oak Street to 160' south of Oak Street (MC#932)
- (s) 25th Avenue North, both sides, from West Grand Avenue to the CN railroad tracks (MC#937)
- (t) 26th Street North, the west side, from STH 54 (Plover Road) to 100 feet south of STH 54 (Plover Road) (MC#961)
- (u) 26th Street North, the east side, from STH 54 (Plover Road) to 250 feet south of STH 54 (Plover Road) (MC#961)
- (v) 29th Avenue South, both sides, from 100 feet north to 100 feet south of Pioneer Road (MC#773) (MC#1304)
- (w) 29th Street North right-of-way, between Norton Street and Amundson Street (MC#457)
- (x) Two Mile Avenue, the north side, from 8th Street South, 9th Street South (MC#584) (MC#1304)
- (y) Two Mile Avenue, both sides from Cliff Street to Murwin Circle (MC#855)
Two Mile Avenue, the south side, from 7th Street South to Lincoln Street (MC#1304)
- (z) Two Mile Avenue, the south side, from 100 feet east of 8th Street South, Weeping Willow Drive (MC#565) (MC1304)
Two Mile Avenue, the south side, from 300 feet west of 14th Street South to 16th Street South. (MC#1304)
- (aa) Two Mile Avenue, the north side, from 720 feet west of 8th Street South to 630 feet west of 8th Street South. (MC#1209)
- (21) Streets beginning with the letter "U":
- (22) Streets beginning with the letter "V":
- (23) Streets beginning with the letter "W":
 - (a) Walnut Street, the north side, from 3rd Street South to Elm Street
Walnut Street, the south side, from 2nd Street South to 3rd Street South (MC#1304)
 - (b) Washington Street, the south side, from 334 feet west of 32nd Street North to 386 feet west of 32nd Street North (MC#599)
 - (c) Washington Street, the south side, from 559 feet west of 32nd Street North to 644 feet west of 32nd Street North (MC#601)
 - (d) Washington Street, the south side, from 1008 feet west of 32nd Street to 1075 feet

- west of 32nd Street North (MC#601)
- (e) Webb Avenue, the cul-de-sac (MC#450)
- (f) West Grand Avenue, the north side, from 2nd Avenue to the Grand Avenue Bridge
- (g) (MC#916) (MC#1304)
- (h) Wisconsin Street, both sides, from 5th Street North to 100 feet east of 5th Street North
- (i) Witter Street, the north side, from Lincoln Street to 50 feet west of Lincoln Street (MC#1064)
- (j) (MC#1066) (MC#1304)
- (k) Witter Street, the south side, from 2nd Street South to 3rd Street South
- (l) Witter Street, the north side, from 3rd Street South to 50' west (MC#1068)
- (m) Wood Avenue, the north side, between Sampson Street and Cliff Street (MC#995)
- (24) Streets beginning with the letter "X":
- (25) Streets beginning with the letter "Y":
- (26) Streets beginning with the letter "Z":
- (27) All Alleys.
- (b) Parking, Stopping, or Standing Prohibited. No person shall park, stop, or leave standing, any vehicle for any purpose upon the following streets, or parts of street at any time:
 - (1) 2nd Avenue South, both sides, from Hurley Street to Seneca Road (MC#349)
 - (2) 4th Avenue North (State Highway 34), both sides, from Bonow Avenue to the north city limits
 - (3) 4th Avenue North, both sides, from West Jackson Street to Fremont Street
 - (4) 4th Avenue South, the east side, from Johnson Street to West Grand Avenue
 - (5) 6th Street South, the east side, from Peach Street to Apple Street, between 6:00 a.m. and 6:00 p.m. on school days. "School days" is defined as September 1 to June 15. (MC #1142)
 - (6) 7th Street North west side, from 200 feet north of Baker Street to Drake Street (MC#547)
 - (7) 8th Street South, both sides, from Oak Street to the south city limits
 - (8) 11th Street North, the east side, from Oak Street to Prospect Street (MC#764)
 - (9) (MC#796) REPEALED (MC#1306)
 - (10) (MC#1053) REPEALED (MC#1306)
 - (11) (MC#1053) REPEALED (MC#1306)
 - (12) (MC#1053) REPEALED (MC#1306)
 - (13) (MC #1053) REPEALED (MC#1306)
 - (14) Baker Drive, both sides, from 17th Street North to Washington Street
 - (15) East Grand Avenue, the south side, from Lincoln Street to 160 feet east of 6th Street South (MC#1263)
 - (a) East Grand Avenue, the south side, from 7th Street South to 9th Street South (MC#1263)
 - (16) East Jackson Street, both sides, from the Jackson Street Bridge to East Grand Avenue
 - (17) Grand Avenue Bridge, both sides, entire length of the bridge
 - (18) Oak Street, the south side, the 700 block (MC#364)
 - (19) Oak Street, both sides, from 50 feet east of 11th Street to 50' west of 11th Street (MC#913)
 - (20) Peach Street, from S.T.H. 54 (East Riverview Expressway) to 32nd Street South (MC#852)
 - (21) Riverview Expressway, both sides, and including the entire length of the bridge
 - (22) West Grand Avenue, both sides, from 4th Avenue to the west city limits
 - (23) (MC#1306)
 - (24) West Jackson Street, both sides, from West Grand Avenue through the entire length of the Jackson Street Bridge (MC#1306)
 - Two Mile Avenue, the north side, from 7th Street South to 8th Street South (MC#1306)
- (c) Parking Prohibited During Certain Periods. No person shall park or leave standing, any vehicle upon any of the following streets or parts of streets at the time indicated, except temporarily for the purpose of and while actually engaging in receiving or discharging passengers:
 - (1) (MC#1307)
 - (2) 6th Street South, the east side, from Dewey Street to Dale Street, from 3:00 a.m. to 8:00 a.m.

- (MC#1024)
- (3) 6th Street South, the west side, from Peach Street to Apple Street, between 6:40 a.m. and 7:30 a.m. and 2:15 p.m. to 3:00 p.m. on school days, with 5 minutes for loading and unloading. "School days" is defined at September 1 to June 15 (MC#1142)
 - (4) 7th Street South, the west side, from Peach Street to Apple Street, from 6:00 a.m. to 6:00 p.m.
 - (5) 8th Street North, the west side, from 200 feet north of Oak Street to Saratoga Street, from 7:30 a.m. to 4:30 p.m. on school days.
 - (6) 10th Avenue North, the east side, Fremont Street north to the railroad tracks, Monday through Friday, 7:00 a.m. to 5:00 p.m.
 - (7) 10th Avenue North, the west side, Butler Street north to the railroad tracks, Monday through Friday, 7:00 a.m. to 5:00 p.m.
 - (8) 12th Street South, the west side, from Chestnut Street to East G Street, from 7:30 a.m. to 4:30 p.m., on school days (MC#730)
 - (9) REPEALED(MC#1317)
 - (10) 16th Street South, the west side, from 300 feet south of East Riverview Expressway to Clyde Avenue, between 7:30 a.m. and 4:30 p.m., on school days (MC#844)
 - (11) 17th Avenue, the west side, from Alton Street to Essex Street, from 7:30 a.m. to 4:30 p.m., on school days (MC#677)
 - (12) Alton Street, the south side, from 17th Avenue South to 50 feet east of 16th Avenue South, from 7:30 a.m. to 4:30 p.m. on school days.
 - (13) REPEALED (MC#1334)
 - (14) Cindy Court, Michael Court to the cul-de-sac, between 7:30 a.m. and 4:30 p.m. on school days (MC#878)
 - (15) East G Street, the south side, from 9th Street South to 135 feet west, between 8:00 a.m. and 5:00 p.m., Monday through Friday (MC#352)
 - (16) Essex Street, the north side, from 17th Avenue South to 75 feet west of 17th Avenue South, between 7:30 a.m. and 4:30 p.m., on school days (MC#937)
 - (17) (MC#1307)
Fremont Street, the north side, from 9th Avenue North to 10th Avenue North, except Saturday, Sundays, and holiday. (MC#1307)
 - (18) James Court, both sides, from the south cul-de-sac to the north cul-de-sac, between 7:30 a.m. and 4:30 p.m., on school days (MC#881)
 - (19) Lincoln Street, the west side, from Birch Street to 135 feet South of Birch Street, 7:30 a.m. to 4:30 p.m., on school days (MC#354)
 - (20) (MC#1307)
 - (21) Maple Street, the north side, from 3rd Street South to 4th Street South, from 7:00 a.m. to 5:00 p.m. (MC#432)
 - (22) Michael Drive, from 16th Street South to Michael Drive, from 7:30 a.m. to 4:30 p.m., on school days (MC#878)
 - (23) Oak Street, the north sides, from 8th Street to 80 feet east of 8th Street, between 7:00 a.m. and 4:30 p.m. (MC#382)
 - (24) Oak Street, the south side, from 8th Street to 145 feet east of 8th Street, between 7:00 a.m. and 4:30 p.m. (MC#382)
 - (25) Pepper Avenue, the north side, from 15th Street South to 16th Street South, between 7:30 a.m. and 4:30 p.m., on school days (MC#398)
Hill Street, the west side, from Mead Street to Garfield Street (MC#1307)
Mead Street, the north side, from Hill Street to Garfield Street, between 7:30 a.m. and 4:30 p.m. on school days (MC#1307)
Pepper Avenue, the south side, from 16th Street South to 100 feet west of 16th Street South, on school days (MC#1307)
- (d) No Parking Except Authorized Vehicles. Except as herein permitted, no person shall park, stop, or leave standing, any vehicle, in the following places unless authorized by permit issued by the City of Wisconsin Rapids or by any official traffic control sign.
- (1) 1st Street North, both sides, the first spaces south of East Jackson Street, except for

- handicapped parking (MC#782)
- (2) (MC#782) (MC#1308)
 - (3) 1st Street North, the west side, the first two spaces north of Oak Street, except for handicapped parking (MC#782)
 - (4) 2nd Avenue North, west side, the first space north of West Grand Avenue, except for handicapped parking for a time limit of 25 minutes (MC#975)
 - (5) 2nd Street North, the east side, the first space north of Oak Street, except for handicapped parking (MC#782)
 - (6) 2nd Street South, the west side, the first space north of Birch Street, except for handicapped parking (MC#687)
 - (7) 2nd Street South, both sides, the first space north of East Grand Avenue, except for handicapped parking (MC#782)
 - (8) 2nd Street South, both sides, the first space south of Oak Street, except for handicapped parking (MC#782)
 - (9) 2nd Street South, the west side, the first two spaces south of Maple Street, except for emergency vehicles. (MC#1122)
 - (10) 4th Avenue North, the west side, the 14th and 15th spaces north of West Grand Avenue, except for handicapped parking. (MC#614)
 - (11) 4th Street South, the west side, the first parking space south of East Grand Avenue, except for handicapped parking. (MC#1098)
 - (12) (MC#531) (MC#1308)
 - (13) 10th Avenue North, the east side, the first two spaces south of Fremont Street, except handicapped parking (MC#434)
 - (14) (MC#601) (MC#1308)
 - (15) 11th Street North, the west side, from 103 feet north of Oak Street to 117 feet north of Oak Street, except for handicapped parking (MC#377)
 - (16) Avon Street, the north side, the first parking space east of Market Street, except handicapped parking for "jurors only". (MC#1131)
 - (17) (MC#373) (MC#1308)
 - (18) Chestnut Street, the north side, from 365 feet east of Hill Street to 405 feet east of Hill Street, except handicapped parking (MC#731)
 - (19) City hall parking lot adjacent to the west side of city hall, bounded by West Jackson Street and West Grand Avenue. On the east side, the first four southern-most spaces are assigned to city police department employees' vehicles. The next three spaces shall be assigned as follows: police administrator, police administrator, and chief of police. The remaining spaces shall be for official police vehicles. The west side, the three southern-most spaces assigned to city police department employees' vehicles; the next space is motorcycle parking; the next five spaces are official police vehicles; the next space is motorcycle parking; and the next two are assigned to city police department employees' vehicles. All private vehicles must have tan-colored "City Employee Parking Permit" tags. (MC#556)
 - (20) City hall parking lot adjacent to the north side of the city hall, bounded by West Jackson Street, except the 6th and 7th spaces from the east end for loading zone for city proposes between 7:00 a.m. and 5:00 p.m., Monday through Friday, except holidays. The remaining spaces for the police department employees' vehicles All private vehicles must have "City Employee Parking Permit" tags. (MC#765) (MC#1308)
 - (21) (MC#649) REPEALED (MC#1308)
 - (22) Fremont Street, the south side, the first two spaces east of 10th Avenue North, except handicapped parking (MC#434)
 - (23) Garfield Street, the west side, from 15 feet south of Chestnut Street to 40 feet south of Chestnut Street, except for handicapped parking (MC#743)
 - (24) Johnson Street, the south side, from 41 feet east of 4th Avenue South to 61 feet east of 4th Avenue South, except for handicapped parking. (MC#1109)
 - (25) Market Street, the east side, the 1st and 2nd spaces south of Baker Street, except handicapped parking, (MC#980) (MC#1308)

- (26) Market Street, the east side, the 3rd space south of Baker Street, except for taxicab pickup and delivery only for a time limit of 25 minutes (MC#980)
 - (27) Peach Street, the south side, from 66 feet east of Lincoln Street to 90 feet east of Lincoln Street, except handicapped parking (MC#419)
 - (28) West Grand Avenue, the north side, the first space west of 1st Avenue S, except for taxicab pickup and delivery only (MC#1239)
- (e) Parking Prohibited During Certain Periods Except for Authorized Vehicles. No person shall park or leave standing, any vehicle upon any of the following streets or parts of street at times indicated, except authorized vehicles, or by authorized permit issued by the City of Wisconsin Rapids, or by an official traffic control sign.
- (1) REPEALED (MC#1309)
 - (2) (MC#442) REPEALED (MC#1309)
 - (4) (MC#636) REPEALED (MC#1309)
 - (5) 10th Avenue South, the west side, from 300 feet north of 2nd Avenue South to 600 feet north of 2nd Avenue South, between 7:30 a.m. and 4:30 p.m., on school days, except school bus loading
 - (6) 11th Street North, the west side, from 185 feet north of Oak Street to Prospect Street, between 7:00 a.m. and 4:00 p.m., on school days, except school bus loading
 - (7) 12th Street South, the west side, from Huntington Avenue to 140 feet north of Huntington Avenue, from 8:00 a.m. to 5:00 p.m., except used as a loading zone (MC#650)
 - (8) 12th Street South, the east side, from 120 feet south of Chestnut Street to 350 feet south of Chestnut Street, between 7:30 a.m. and 4:30 p.m., on school days, except school bus loading
 - (9) 13th Avenue South, the west side, from 420 feet south of Alton Street to 625 feet south of Alton Street, between 7:30 a.m. and 4:30 p.m., on school days, except school bus loading (MC#747)
 - (10) Alton Street, the south side, from 50 feet east of 16th Avenue South to 100 feet east of 16th Avenue South, between 7:30 a.m. and 4:30 p.m., on school days, except for taxicab pickup and delivery only. (MC#953)
 - (11) Chestnut Street, the north side, from Hill Street to 255 feet east of Hill Street, between 7:30 a.m. and 4:30 p.m., on school days, except for school bus loading. (MC#934)
 - (12) (MC#387) (MC#1309)
 - (13) City hall parking lot adjacent to the west side of city hall bounded by West Jackson Street and 4th Avenue North, except authorized city employee vehicles, between 7:00 a.m. and 5:00 p.m., Monday through Friday, except holidays. (MC#914) (MC#923)
 - (14) City-owned parking lot north of city-owned Dixon Parking Lot, adjacent to 4th Avenue, the second row north of the Dixon Lot from the 1st space east of 4th Avenue to 9 spaces east of 4th Avenue. This is designated reserved parking for authorized city employees parking, between 7:00 a.m. and 10:00 p.m., Monday through Friday, except holidays. (C#923)
 - (15) City-owned parking lot north of city-owned Dixon Parking Lot, east of 4th Avenue, South of West Jackson Street, not including the first 9 spaces east of 4th Avenue in the second row north of the Dixon Lot, except authorized city employee's vehicles, persons transacting business at city hall, or at businesses located at 320 West Grand Avenue, between 7:00 a.m. and 10:00 p.m., Monday through Friday, except holidays. (MC#765)
 - (16) Hill Street, the east side, from Chestnut Street to Mead Street, between 7:30 a.m. and 4:30 p.m., on school days, except school bus loading. (MC#1309)
 - (17) Lincoln Street, the east side, from 150 feet north of Witter Street to 100 feet south of Peach Street, from 7:00 a.m. to 7:45 a.m. and 2:15 p.m. to 2:45 p.m., on school days, except school bus loading (MC#953)
 - (18) REPEALED (MC#1309)
 - (19) (MC#675) REPEALED (MC#1309)
 - (20) Prospect Street, the south side, from 11th Street North to 160 feet west of 11th Street North, from 7:00 a.m. to 4:00 a.m., on school days, except school bus loading (MC#621)
 - (21) 17th Avenue South, the east side, from Essex Street to Alton Street, between 7:30 a.m. and 4:30 p.m. on school days, except school bus loading (MC#930)

- (22) 28th Street North, both sides, from 485 feet north of Washington Street to 980 feet north of Washington Street, between 7:30 a.m. and 4:30 p.m. on school days, except for school bus loading (MC#1081)
- (f) No parking in City Park Areas. No person shall operate, park, or leave standing any motor vehicle in city park areas or city-owned property zoned conservancy, except where operation or parking a motor vehicle is specifically allowed. The restriction of this ordinance shall also apply to snowmobiles.
- (1) Except vehicles carrying persons unable to walk within Robinson Park (because of age, infirmity, or physical handicap) may be permitted to enter the park at the Apricot Street entrance and park.
- (2) Except vehicles carrying food, beverage, or equipment may be permitted to use the service road between the Apricot Street parking area and the shelter house for the purpose of unloading and loading such materials, but shall not be permitted to park at the shelter house for a greater period of time than that required for such operations.
- (g) No parking in city park areas during certain periods except for authorized vehicles. No motor vehicle may be parked in a city park between the hours of 11:00 p.m. and 6:00 a.m. (MC#557)
- (1) Except the police department may grant permission for parking a vehicle in a city park between 11:00 p.m. and 6:00 a.m. for special events previously approved by the Park and Recreation Commission.
- (2) Except fishermen may park their vehicles between 11:00 p.m. and 6:00 a.m. in the south parking lot of Ben Hanson Park for use of the Ben Hanson Park boat landing.
- (h) Parking, Stopping, or Standing Prohibited During Certain Periods Except for Authorized Vehicles. No person shall park, stop, or leave standing, any vehicle for any purpose upon the following streets or parts of streets at the times indicated, except the noted authorized vehicles, or by authorized permit issued by the City of Wisconsin Rapids, or by an official traffic control sign. (MC #1097)
- (1) 8th Street North, the west side, from 50 feet north of Prospect Street to the vision triangle 30 feet north of Oak Street, between 8:00 a.m. and 8:40 a.m., and between 3:20 p.m. and 3:50 p.m., on school days, except for the following authorized vehicles who may load and unload passengers during those times: school buses, vehicles for persons with disabilities, taxicabs, Boys and Girls Club vans, and other School District-approved vehicles.
- (2) Oak Street, the north side, between 7th St North and 8th St North between 8:00 a.m. and 4:00 p.m., on school days, except for the following authorized vehicles authorized vehicles who may load and unload passengers during those times: school buses, vehicles for persons with disabilities, taxicabs, Boys and Girls Club vans, and other School District-approved vehicles.(MC#1295)
- (2) Limited Time Parking. When official traffic control devices are erected in any block, giving notice thereof, no person shall park, stop, or leave standing, any vehicle, whether attended or unattended, for more than the following time periods between the specified hours of days, on all days except specified days, on any of the following streets or parts thereof:
- (a) 5-minute parking
- (1) (MC#1053) REPEALED (MC#1310)
- (2) (MC #1053) REPEALED (MC#1310)
- (b) 10-minute parking:
- (1) REPEALED (MC#1310)
- (2) Chestnut Street, the south side, from 140 feet east of 12th Street to 170 feet east of 12th Street (MC#731)
- (3) (MC#950) REPEALED (MC#1310)
- (c) 15-minute Parking:
- (1) 4th Street South, the west side, from East Grand Avenue to Birch Street, between 8:00 a.m. and 6:00 p.m., Monday through Friday (MC#1066)
- (3) 8th Street North, the west side, from 50 feet north of Prospect Street to Saratoga Street, from 7:30 a.m. to 4:30 p.m., on school days, for student pickup (MC#495)
- (4) (MC#373) REPEALED (MC#1310)
- (5) Chestnut Street, the north side, from 255' east of Hill Street to 325' east of Hill Street, during school hours ↯ (MC#1066)

- (6) (MC#373) REPEALED (MC#1310)
- (7) Mead Street, the south side, from Hill Street to 80 feet east of Hill Street (MC#934)
- (8) Oak Street, the north side, from 7th Street to 8th Street, from 7:30 a.m. to 4:30 p.m., on school days, for student pickup (MC#373)
- (9) Saratoga Street, the south side, from 7th Street South to 8th Street South, from 7:30 a.m. to 4:30 p.m., on school days, for student pickup (MC#373)
- (10) 16th Street South, the east side, from 650 feet south of East Riverview Expressway to 995 feet south of East Riverview Expressway (MC#930)
- (ca) 30-Minute Parking
East Grand Avenue, the north side, from 150 feet east of East Jackson Street to 6th Street South, from 8:00 a.m. to 10:00 a.m. (MC#1263)
- (d) One-hour parking:
Birch Street, the north side, from Garfield Street to 140 feet east of Garfield Street, between 8:00 a.m. and 6:00 p.m., except Sundays and holidays. (MC#1310)
 - (1) East Grand Avenue, the north side, from 3rd Street to 4th Street (MC#519)
 - (2) Harrison Street, both sides, from 4th Avenue North to 5th Avenue (MC#520)
- (e) 90-minute Parking:
 - (1) 10th Avenue, the east side, from West Grand Avenue to McKinley Street, between 8:00 a.m. and 6:00 p.m., except Sundays and holidays
 - (2) 17th Avenue, the east side, from 50 feet north of West Grand Avenue to 150 feet north of West Grand Avenue, between 8:00 a.m. and 6:00 p.m., except Sundays and holidays
- (f) Two-hour Parking
 - (1) Streets beginning with the letter "A":
 - (b) (MC#975) REPEALED (MC#1310)
 - (c) Avon Street, the north side, from 184 feet east of 5th Street North of 8th Street North, 9:00 a.m. to 5:00 p.m., Monday through Friday (MC#860)
 - (d) Avon Street, the north side, from Market Street to 5th Street, from 9:00 a.m. to 5:00 p.m., Monday through Friday (MC#848)
 - (e) Avon Street, the south side, from 5th Street North to 8th Street North, 9:00 a.m. to 5:00 p.m., Monday through Friday (MC#860)
 - (2) Streets beginning with the letter "B":
 - (a) REPEALED (MC#1310)
 - (3) Streets beginning with the letter "C":
 - (a) Chase Street, both sides, from 1st Avenue South to 3rd Avenue South, 9:00 a.m. to 5:00 p.m., Monday through Friday (MC#860)
 - (b) Clyde Avenue, both sides, from 14th Street south to 16th Street South, between 7:30 a.m. and 4:30 p.m., on school days (MC#812)
 - (4) Streets beginning with the letter "D":
 - (a) Dewey Street, the north side, from 50 feet east of 3rd Street to 4th Street (MC#970)
 - (b) Dewey Street, the north side, from 3rd Street South to 50 feet east of 3rd Street South, and from 4th Street to Hill Street. (MC#1310)
 - (c) REPEALED (MC#1310)
 - (d) REPEALED (MC#1310)
 - (5) Streets beginning with the letter "E":
 - (a) (MC#373) REPEALED (MC#1310)
 - (b) East Grand Avenue, the south side, from 4th Street South to Lincoln Street from 9:00 a.m. to 5:00 p.m. Monday through Friday (MC#1263)
 - (ba) East Grand Avenue, the south side, from 160 feet east of 6th Street South to 7th Street South, from 9:00 a.m. to 5:00 p.m. Monday through Friday.(MC#1263)
 - (bb) East Grand Avenue, the north side, from 4th Street South to 50 feet west of Garfield Street, from 9:00 a.m. to 5:00 p.m. Monday through Friday.(MC#1263)
 - (bc) East Grand Avenue, the north side, from 75 feet east of Garfield Street to (c) (MC#970) REPEALED (MC#1310)
 - (d) ElmStreet, the west side, between Maple and Birch Street from 7:00 a.m. to 7:00

- p.m.(MC#370) (MC#1310)
- (e) Engler Drive, both sides, from 25th Avenue South to 27th Avenue South from 7am to 4pm on school days. (MC#1349)
East Jackson Street.(MC#1263)
- (6) Streets beginning with the letter "F":
- (a) 1st Avenue South, the west side, from West Grand Avenue to Goggins Street, except the first 5 parking spaces south of West Grand Avenue, from 9:00 a.m. to 5:00 p.m., Monday through Friday (MC #1317)
1st Avenue South, the west side, from Goggins Street to 3rd Avenue South (MC#1310)
 - (b) 1st Street North, both sides, from Oak Street to East Jackson Street, between 9:00 a.m. to 5:00 p.m., Monday through Friday (MC#789)
 - (c) 4th Avenue North, the west side, from West Grand Avenue to the 25 spaces north of West Grand Avenue, except the 14th,15th, and 24th spaces north of West Grand Avenue, between 8:00 a.m. and 6:00 p.m., except Sundays and holidays (MC#765)
 - (d) 4th Avenue South, west side, West Grand Avenue to Johnson Street, from 9:00 a.m. to 5:00 p.m., Monday through Friday (MC#848) (MC#1310)
 - (e) 4th Street South, the east side, from Birch Street to Maple Street, 9:00 a.m. to 5:00 p.m., Monday through Friday (MC#860)
 - (f) 4th Street South, the east side, from Dewey Street to Sherman Street (MC#970)
 - (g) 4th Street South, the west side, from East Grand Avenue to Oak Street between 9:00 a.m. and 5:00 p.m., 4th Street South, the east side, from East Grand Avenue to Oak Street, between 9:00 a.m. and 5:00 p.m. (MC#1317) (MC#419)
 - (h) 5th Street North, both sides, Saratoga Street to Avon Street, 9:00 a.m. to 5:00 p.m., Monday through Friday (MC#860)
 - (1) 5th Street North, both sides, from East Jackson Street to Saratoga Street, 9:00 a.m. to 5:00 p.m., Monday through Friday. This parking restriction shall expire June 30, 2025.(MC#1348)
 - (i) 14th Street South, both sides, from Pepper Avenue to James Court, between 7:30 a.m. and 4:00 p.m., on school days (MC#742) (MC#1310)
 - (j) 14th Street South, both sides, from Pepper Avenue to Huntington Avenue, from 7:00 a.m. to 4:30 p.m.,on school days. (MC#785) (MC#1310)
 - (k) 14th Street South, both sides, from Huntington Avenue to Grove Avenue, from 7:30 a.m. to 4:30 p.m., on school days (MC#799) (MC#1310)
 - (l) Fremont Street, the south side from 8th Avenue North to 10th Avenue North (MC#1310)
- (7) Streets beginning with the letter "G":
- (a) (MC#909) REPEALED (MC#1310)
 - (b) Goggins Street, both sides, from 7th Avenue South to 8th Avenue South, 9:00 a.m. to 5:00 p.m., Monday through Friday (MC#860)
 - (c) (MC#909) REPEALED (MC#1310)
- (8) Streets beginning with the letter "H":
- (a) Huntington Avenue, the north side, from 14th Street South to 50 feet west of 16th Street South, from 7:00 a.m. to 4:30 p.m., on school days (MC1310)
 - (b) Huntington Avenue, the north side, from 12th Street South to 14th Street South, from 7:30 a.m. to 4:30 p.m., on school days (MC#1310)
 - (c) Huntington Avenue, the south side, from 14th Street South to 50 feet west of 16th Street South, from 7:00 a.m. and 4:30 p.m., (MC#432) (MC#1310)
 - (e) Huntington Avenue, the south side, from 12th Street South to 14th Street South, from 7:00 a.m. to 4:30 p.m., on school days (MC#714) (MC#1310)
- (9) Streets beginning with the letter "I":
- (10) Streets beginning with the letter "J":
- (a) Johnson Street, the north side, from 1st Avenue to 3rd Avenue, from 9:00 a.m. to 5:00 p.m., Monday through Friday (MC#848)

- (b) Johnson Street, the south side, from 1st Avenue to 3rd Avenue, from 9:00 a.m. to 5:00 p.m., Monday through Friday (MC#848)
- (c) Johnson Street, the south side, from 3rd Avenue to 4th Avenue, from 9:00 a.m. to 5:00 p.m., Monday through Friday (MC#848)
- (11) Streets beginning with the letter "K":
- (12) Streets beginning with the letter "L":
 - (a) (MC#950) REPEALED (MC#1310)
 - (b) (MC#950) REPEALED (MC#1310)
 - (c) Lily Lane, from 16th Street South to 400 feet west of 16th Street South, between 7:30 a.m. and 4:00 p.m., on school days (MC#488)
 - (d) Lincoln Street, the east side, from 150 feet north of Witter Street to Peach Street, between 7:45 a.m. and 2:15 p.m. on school days. (MC#953)
 - (e) Lincoln Street, the west side, from 200 feet north of Witter Street to 135 feet south of Birch Street, on school days (MC#970)
 - (f) REPEALED (MC#1310)
- (13) Streets beginning with the letter "M":
 - (a) Maple Street, the north side, between Elm Street and 4th Street South, 9:00 a.m. and 5:00 p.m. (MC#950)
- (14) Streets beginning with the letter "N":
 - (a) REPEALED (MC#1310)
 - (b) 9th Avenue South, both sides, from Chase Street to Goggins Street, except Saturdays, Sundays, and holidays
- (15) Streets beginning with the letter "O":
 - (a) Oak Street, the north side, from 70 feet east of 2nd Street to 3rd Street, from 9:00 a.m. to 5:00 p.m., Monday through Friday (MC#623) (MC#1310)
 - (a) Oak Street, the south side, from 3rd Street to 4th Street, from 9:00 a.m. to 5:00 p.m., Monday through Friday (MC#1310)
- (16) Streets beginning with the letter "P":
 - (a) Peach Street, the south side, from 65 feet west of 6th Street South to 6th Street South
 - (b) Pepper Avenue, the south side, from 50' east of 14th Street South, to 100' west of 16th Street South, from 7:00 a.m. to 4:30 p.m. on school days (MC#785) (MC#1310)
 - (c) Pepper Avenue, the north side, from 14th Street South to 15th Street South (MC#785)
 - (d) Pepper Avenue, both sides, from 10th Street South to 14th Street South, from 7:00 a.m. to 4:30 p.m., on school days (MC#805) (MC#1310)
- (17) Streets beginning with the letter "Q":
- (18) Streets beginning with the letter "R":
- (19) Streets beginning with the letter "S":
 - (a) (MC#950) REPEALED (MC#1310)
 - (1) Saratoga Street, both sides, from East Jackson Street to 7th Street North, 9:00 a.m. to 5:00 p.m., Monday through Friday. This parking restriction shall expire on June 30, 2025. (MC#1348)
 - (b) (MC#822) REPEALED (MC#1310)
 - (c) 2nd Street South, the east side, from Walnut Street to Witter Street, between 9:00 a.m. and 5:00 p.m., except Sundays and holidays (MC#950)
 - (d) 2nd Street North, the east side, from Oak Street to East Jackson Street, from 9:00 a.m. to 5:00 p.m., Monday through Friday (MC#848)
 - (e) 2nd Street North, the east side, from East Jackson Street to Market Street, from 9:00 a.m. to 5:00 p.m., Monday through Friday (MC#848)
 - (f) 2nd Street South, the east side, from Oak Street to East Grand Avenue (MC#623)
 - (g) 2nd Street South, the east side, from Birch Street to Maple Street (MC#716)
 - (h) 2nd Street South, the west side, from Birch Street to ten parking spaces south of Birch Street, from 9:00 a.m. to 5:00 p.m., Monday through Friday (MC#808)

- (MC#1310)
- (i) 2nd Street South, the west side, from East Grand Avenue to Oak Street, between 9:00 a.m. and 5:00 p.m., Monday through Friday (MC#789)
 - (j) 2nd Street South, the west side, from East Grand Avenue to Birch Street, from 9:00 a.m. to 5:00 p.m., Monday through Friday (MC#848)
 - (k) 2nd Avenue North, the west side, from one parking space north of West Grand Avenue to Jackson Street, from 9:00 a.m. to 5:00 p.m., Monday through Friday (MC#888) (MC#1310)
 - (l) 2nd Avenue South, the west side, from Johnson Street to West Grand Avenue, from 9:00 a.m. to 5:00 p.m., Monday through Friday (MC#848)
 - (m) 2nd Avenue south, the east side, from Johnson Street to West Grand Avenue, from 9:00 a.m. to 5:00 p.m., Monday through Friday (MC#848)
 - (n) (MC#1310)
 - (o) 6th Street South, the west side, from East Grand Avenue to Peach Street, between 6:00 a.m. and 6:00 p.m., except Sundays and holidays
 - (q) 16th Street South, both sides, from 350 feet north of East Riverview Expressway to Daly Avenue, between 7:00 a.m. and 4:30 p.m. on school days. (MC#899) (MC#1310)
 - (r) 7th Avenue South, both sides, from Chase Street to Hale Street, except east side between Goggins and Hale Streets, 9:00 a.m. to 5:00 p.m., Monday through Friday (MC#860)
 - (# s) 7th Street South, the east side, from Peach Street to Apple Street, between 9:00 a.m. and 5:00 p.m., except Sundays and holidays (MC#950)
 - (t) 7th Street South, the west side, from Pepper Avenue to 100' south of Pepper Avenue (MC#1140)
 - (u) 16th Street South, the west side, from 50 feet south of Huntington Avenue to 50 feet north of Clyde Avenue, from 7:00 a.m. to 4:30 p.m., on schooldays.(MC#732) (MC#1310)
 - (v) (MC#812) REPEALED (MC#1310)
- (20) Streets beginning with the letter "T":
- (a) 3rd Avenue South, both sides, from Chase Street to 150 feet north of Chase Street, 9:00 a.m. to 5:00 p.m., Monday through Friday (MC#860)
 - (b) 3rd Avenue North, both sides, West Grand Avenue to Jackson Street, from 9:00 a.m. to 5:00 p.m., Monday through Friday (MC#848)
 - (c) 3rd Avenue South, both sides, West Grand Avenue to Johnson Street, from 9:00 a.m. to 5:00 p.m., Monday through Friday
 - (d) REPEALED (MC#1310)
 - (e) 3rd Street North, both sides, from Oak Street to East Jackson, from 9:00 a.m. to 5:00 p.m., Monday through Friday (MC#848) (MC#1310)
 - (f) 10th Avenue North, the west side, from Fremont Street to Butler Street, between 8:00 a.m. and 6:00 p.m. except Sundays and holidays
 - (h) 12th Street South, the east side, from Pepper Avenue to Clyde Avenue (MC#714)
 - (i) 12th Street South, the west side, from Pepper Avenue to 140 feet north of Huntington Avenue (MC#714)
- (21) Streets beginning with the letter "U":
- (22) Streets beginning with the letter "V":
- (23) Streets beginning with the letter "W":
- (a) Wisconsin Street, both sides, from 100 feet east of 5th Street North to 7th Street North, 9:00 a.m. to 5:00 p.m., Monday through Friday (MC#860)
Wisconsin Street the south side, from 7th street North to 8th Street North, 9:00 a.m. to 5:00 p.m., Monday through Friday. (MC#860) (MC#1310)
 - (b) REPEALED (MC#1310)
 - (c) West Grand Avenue, the south side, from 1st Avenue to 2nd Avenue, from 9:00 a.m. to 5:00 p.m., Monday through Friday (MC#848)
 - (c) West Grand Avenue, the north side, the first three spots east of 2nd Avenue,

from 9:00 a.m. to 5:00 p.m. Monday through Friday. (MC#1310)

- (24) Streets beginning with the letter "X":
- (25) Streets beginning with the letter "Y":
- (26) Streets beginning with the letter "Z":
- (g) 25 minute parking.
 - (1) Market Street, the east side, from Baker Street to Avon Street, from 9:00 a.m. to 5:00 p.m., Monday through Friday (MC#980)
- (h) 30 minute parking
 - (1) 7th Street South, the west side, from Daly Avenue to Pepper Avenue (MC#1137)
- (3) Angle Parking. No person shall park, stop, or leave standing, any vehicle not parallel to the curb line or edge of any city street except in the properly marked spaces designated as follows below:
 - (a) REPEALED (MC#1310)
 - (b) 1st Street North, both sides, from Oak Street to East Jackson Street
 - (c) 1st Avenue South, the west side, from West Grand Avenue to Johnson Street
 - (d) 2nd Avenue South, both sides, from West Grand Avenue to West Jackson Street
 - (e) 2nd Avenue South, the west side, from Johnson Street to West Grand Avenue
 - (f) 2nd Street North, the east side, from Oak Street to the city-owned parking lot bounded by Market Street and 1st Street North
 - (g) 2nd Street North, the east side, from a point 208 feet south of the extension of the south curb line of Love Street to the Green Bay and Western Railroad property line
 - (h) 2nd Street South, the west side, from Birch Street to 129 feet north of Walnut Street. except from 15' south of Maple Street to 33' south of Maple Street (MC#1122)
 - (i) 2nd Street South, both sides, from West Grand Avenue to Oak Street
 - (j) 4th Avenue North, the west side, from West Grand Avenue to the city hall parking lot bounded by West Jackson Street
 - (k) 4th Avenue South, the west side, from Johnson Street to West Grand Avenue
 - (l) 5th Street North, the west side, from 140 feet north of Avon Street to Baker Street (TEMPORARILY REPEALED) (MC#398)
 - (m) 10th Avenue North, the east side, from Fremont Street to 177 feet south of Fremont Street
 - (n) 10th Avenue North, the west side, from Fremont Street to 139 feet south of Fremont Street
 - (o) 10th Avenue South, the west side, from 325 feet south of Gardner Street to 2nd Avenue South
 - (p) 10th Street South, the east side, from 105 feet south of Wood Avenue to 318 feet south of Wood Avenue
 - (q) 11th Street North, the west side, from 15 feet north of Oak Street to 93 feet north of Oak Street
 - (r) 14th Street South, the west side, from Clyde Avenue to 263 feet south of Clyde Avenue
 - (s) 16th Street South, the east side, from Peach Street to 135 feet north of Peach Street
 - (t) Apple Street, the south side, from 100 feet east of 6th Street South to 150 feet west of 8th Street South
 - (u) Clyde Avenue, the south side, from 138 feet west of 14th Street South to 14th Street South
 - (v) Dewey Street, the south side, from 3rd Street South to 4th Street South
 - (w) Johnson Street, the north side, from 4th Avenue South to 109 feet east of 4th Avenue South
 - (x) Johnson Street, the south side, from 1st Avenue South to 2nd Avenue South
 - (y) Oak Street, the north side, from 25 feet east of 10th Street to 25 feet west of 11th Street (MC#779)
 - (z) Pine Street, the north side, from Garfield Street to Elm Street
 - (aa) West Grand Avenue, the north side, from 2nd Avenue to 3rd Avenue
- (4) Miscellaneous Parking Restrictions.
 - (a) Street maintenance. Whenever it is necessary to clear or repair a city street, or any part thereof, the city traffic department shall post such highways, or parts thereof, with signs bearing the words "NO PARKING-STREET MAINTENANCE WORK". Such signs shall be erected at least two hours prior to the time that street maintenance work is to be commenced. No person shall park a motor vehicle in violation of such signs.
 - (1) The city-leased parking area lying between 2nd Avenue North and 3rd Avenue North and south of West Jackson Street (Mead-Witter lot), no parking between 11:00 p.m. and 7:00 a.m., for maintenance (MC#793)

- (b) Parking in driveways. No person shall park or leave standing any motor vehicle in any private driveway without the permission of the owner or lessee of the property upon which such driveway is located, whether or not such driveway is posted to limit or restrict parking.
- (c) Parking heavy vehicles in residential districts. No operator or owner of a motor truck, truck tractor, trailer, or semi-trailer, or any other vehicle or combination of vehicles, other than motor busses weighing more than five tons shall park such vehicle on any highway other than a routes state trunk highway, county trunk highway, or designated truck route, in any residential district except for such time as is reasonably necessary to facilitate the loading or unloading of the vehicle.
- (d) Snow emergency parking restrictions.
 - (1) When the mayor, or his designated representative, shall by reason of heavy snow storm or blizzard, proclaim a snow emergency pursuant to Section 66.325, Wisconsin State Statutes, no person shall park, stop, or leave standing any vehicle upon the streets or any portions of the streets during the hours set forth in such proclamation.
 - (2) The common council hereby declares that an emergency exists in the city whenever a snowfall, during any period of 24 hours or less, reaches a depth of four inches or more. Such emergency is declared to be a serious public hazard impairing transportation and public health, safety, and welfare for a period of 48 hours or until such earlier time as snow removal operations have been declared completed by the public works superintendent.
 - (3) Whenever an emergency exists and the mayor, or his designated representative, shall have caused an announcement thereof to be made by not less than two radio stations, whose normal operating range covers the City of Wisconsin Rapids, no person shall park, or allow to be parked, any vehicle of any kind or description upon the streets of the City of Wisconsin Rapids during said emergency. Vehicles may be parked for a period of time not longer than three minutes for actually loading or unloading of passengers, or 30 minutes for actually loading or unloading of property and provided further that no other regulation restricting parking as to place, time, or manner is violated thereby.
 - (4) Authorization of erection of no parking signs. Pursuant to the provisions of Section 66.325, Wisconsin State Statutes, the chief of police, or his designated representative is authorized to erect temporary "NO PARKING" signs during the existence of an emergency created by a snowstorm or excessive snowfall which impairs or prevents the full use of any highway, street, or roadway for transportation.
 - (5) Snow tow-away zones. The chief of police, or his designated representative, is hereby authorized to cause the towing away of vehicles parking in violation of this ordinance.
- (e) **Night parking restrictions. When signs have been erected at, or reasonably near, the corporate limits, alternate side parking will be allowed from 2:00 a.m. until 5:00 a.m. on all streets in the City of Wisconsin Rapids unless otherwise posted or exempted by this ordinance. On even-numbered calendar days, all vehicles shall be parked on the even-numbered side of the street. On odd-numbered calendar days, all vehicles will be parking on the odd-numbered side of the street. No person shall park, stop, or leave standing any vehicle in violation of this subsection. In the even of an emergency police order or snow emergency designated by the public works director, chief of police, or their designee(s), alternate side parking shall be suspended. (MC#1074)**
- (f) Overnight Truck Parking. No trucks or trailers in excess of five tons capacity shall be parked within 175 feet of a residential zone between the hours of 10:00 p.m. and 6:00 a.m., except as follows:
 - (1) One semi-tractor, stake truck, or van, excluding semi-trailers, may be parked at the residence of the operator. On-street parking is prohibited. (MC#823)
 - (2) No motors are left idling, including those necessary for air-conditioning and refrigeration units.
 - (3) Trucks and trailers are parked in authorized areas and are not actively engaged in hook-up or loading activities during the hours of 10:00 p.m. and 6:00 a.m.
 - (4) Operators of commercial trucks in excess of five tons capacity who must keep refrigeration units or other motors in operation will be directed to take the truck to the industrial park. (MC#389)
- (g) There shall be no parking on the streets in the Woodlands Business Park (MC#723)
- (h) There shall be no parking from 3:01 a.m. on July 4 until 6:00 a.m. on July 5, except for permitted vendors and authorized personnel, on both sides of the following streets: (MC#1051)

- (1) 2nd Street South, between East Grand Avenue and Mead Street.
 - (2) The Grand Avenue Bridge.
 - (3) West Grand Avenue, between the Grand Avenue Bridge and 3rd Avenue.
 - (4) East Grand Avenue, between the Grand Avenue Bridge and 3rd Street.
 - (5) 2nd Street, between East Grand Avenue and East Jackson Street.
 - (6) 1st Street North, between Oak Street and East Jackson Street.
 - (7) All other east-west streets from Oak Street to Mead Street, between 2nd Street and 3rd Street.
 - (8) 2nd Avenue, between one-half block north of West Grand Avenue and Johnson Street.
 - (9) Johnson Street, between 2nd Avenue South and 1st Avenue South.
 - (10) 1st Avenue South, between West Grand Avenue and 100 feet south of Goggins Street.
 - (11) Goggins Street, between 1st Avenue South and a point 150 feet west of 1st Avenue South.
- Additionally, there shall be no parking as indicated above on any day that the city's 4th of July fireworks event has been rescheduled to, due to inclement weather or other circumstances. The no parking shall be from 3:01 a.m. that day until 6:00 a.m. the following day.

27.14 HANDICAPPED AND PHYSICALLY DISABLED PARKING REGULATIONS (MC#946)

- (1) Parking in places reserved for the handicapped. When official traffic signs, indicating such restrictions have been erected in accordance with this ordinance, no person shall park, stop, or leave standing any vehicle upon any portion of a street, highway, or public or private parking facility reserved for vehicles displaying special registration plates or identification cards or emblems issued by the Wisconsin Department of Transportation, or for vehicles registered in another jurisdiction, by such other jurisdiction designating the vehicle as one used by a physically handicapped or physically disabled person.
- (2) Display of cards designating handicap. When in use for a parked vehicle, the card designated by Wisconsin Statutes as indicating special parking privileges for handicapped persons shall be displayed so the information on the card is clearly visible outside of the vehicle. If the card is manufactured so as to be suspended, the card shall be hung from the rear view mirror.

27.15 UNLAWFUL REMOVAL OF PARKING CITATIONS

No person other than the owner or operator thereof shall remove a "City Wisconsin Rapids Parking Violation" ticket from a motor vehicle.

27.16 REMOVAL OF ILLEGALLY PARKED VEHICLES

- (1) Hazard to Public Safety. Any vehicle parking, stopped, or standing upon a highway in violation of any of the provisions of this ordinance, is declared to be a hazard to traffic and public safety.
- (2) Removal by Operator. Such vehicle shall be removed by the operator in charge, upon request of any traffic officer, to a position where parking is permitted or to a private or public parking or storage premises.
- (3) Removal by Traffic Officer. Any traffic officer, after issuing a citation for illegal parking, stopping, or standing by an unattended vehicle, in violation of this ordinance, is authorized to remove such vehicle to a position where parking is permitted.
- (4) Removal by Private Service. The officer may order a motor carrier holding a permit to perform vehicle towing services, a licensed dealer, who performs vehicle towing services, to remove and store such vehicle in any public storage garage or rental parking grounds of any facility of the person providing the towing service.
- (5) Towing and Storage Charge. In addition to other penalties provided by ordinance, the owner or operator of a vehicle so removed shall pay reasonable cost of moving, towing, and storage. If the vehicle is towed or stored by a private motor carrier, motor vehicle salvage dealer, or licensed motor vehicle dealer, actual charges regularly paid for such services shall be paid. If the vehicle is stored in a public storage garage or rental facility, customary charges for such storage shall be issued to the owner of the vehicle for the towing or storage charge.
- (6) Registration Record of Vehicle as Evidence. When any vehicle is found upon a street or highway in violation of any provision of this ordinance regulating the stopping or standing, or parking of vehicles and the identity of the operator cannot be determined, the owner, as shown by the ownership registration of the vehicle supplied by the Wisconsin Department of Transportation, or a comparable authority of any other State, shall be deemed to have committed a violation for purposes of enforcement of this ordinance and shall be subject to the applicable forfeiture penalty; provided the defenses defined and described in Wisconsin Statutes 346.485(5)(b) shall be a defense for an owner charged with such violation.

27.17 PENALTIES FOR METER VIOLATIONS

- (1) Any person who shall violate Section 27.05(2) of this ordinance and who shall cause, allow, permit, or suffer any vehicle to be parked overtime, shall pay a forfeiture of \$10.00.
- (2) Any person who shall violate Section 27.05(1) or 27.05(3) of this ordinance shall pay a forfeiture of \$15.00 if paid within 48 hours and \$30.00 if paid thereafter in addition to the forfeiture provided in Section 27.08(1) of this ordinance.
- (3) Any person who shall violate or assist in violation of Section 27.05(4) or 27.05(5) of this ordinance, upon conviction, shall be punished by a forfeiture of not more than \$100.00 or less than \$10.00 and costs of collection, and in default or payment of the forfeiture and costs of collection shall be imprisoned in the county jail for a term not exceeding 10 days.

27.18 PENALTIES FOR PARKING VIOLATIONS (MC#856)

- (1) Forfeitures for uniform state-wide parking, stopping, and standing offenses. Minimum and maximum forfeitures for violation of non-moving traffic violations adopted by reference in Section One of this Ordinance described in Wisconsin Statutes, Chapter 340 to 348, shall be as provided in comparable state non-moving traffic violations.
- (2) Penalty for parking violations. The penalty for parking violations shall be a forfeiture of \$15.00 if paid within 48 hours and \$30.00 if paid after 48 hours.
- (3) Handicapped Parking. The forfeiture for violating Section 27.14(1), entitled "Parking In Places Reserved for the Handicapped," is the amount set by Wisconsin State Statutes. The forfeiture for violating Section 27.14(2), entitled "Display of Cards Designating Handicap," shall be \$30. (MC#946)

27.19 PARKING CITATIONS

The chief of police shall provide a citation for use in enforcing parking offenses.



**PUBLIC WORKS
DEPARTMENT**
1411 CHASE STREET
WISCONSIN RAPIDS, WI 54495
(715) 421-8218 FAX (715) 421-8281

Requestors Name:

Paul Vollert, Public Works Superintendent

Referral Language:

Review and consider proposals for the sale of raw, unscreened compost.

Background Information:

At an earlier Public Works Committee meeting the committee approved selling portion of the compost that is generated on an annual basis. Request for proposals were sent out to various contractors that have inquired about the material previously and proposals will be opened on February 2, 2024 at 12:00 noon.

Recommendation:

At this time there is no recommendation, additional information will follow once proposals are opened.

W I S C O N S I N



PUBLIC WORKS DEPARTMENT

1411 CHASE STREET
WISCONSIN RAPIDS, WI 54495
(715) 421-8218 FAX (715) 421-8281

REQUEST FOR PROPOSALS

THIS IS NOT AN ORDER

DATE: JANUARY 15, 2024

Proposals must be returned on enclosed forms no later than 12:00 noon, Friday February 2, 2024. Proposals may be mailed to 1411 Chase Street, Wisconsin Rapids, WI 54495 attention Paul Vollert or emailed to pvollert@wirapids.org . Proposals that are mailed shall be in a sealed envelope that is marked "RAW UNSCREENED COMPOST PROPOSAL". Proposals that are emailed shall have the same in the subject line of the email.

Proposals received after 2:00pm will not be considered.

SEE ATTACHED SHEETS

REMARKS: _____

DATE: _____ SIGNED _____

TITLE: _____

The City of Wisconsin Rapids, Wisconsin reserves the right to reject any or all proposals, and to accept the proposal or portion of that they deem most advantageous to the City.

Paul Vollert
Public Works Superintendent
City of Wisconsin Rapids

**NOTICE OF PROPOSAL**

The City of Wisconsin Rapids, Wisconsin will accept sealed proposals for the sale of raw unscreened Compost. All proposals must be in the office of the Public Works Superintendent, City Garage, 1411 Chase Street Wisconsin Rapids, Wisconsin 54495 by 12:00 noon, Friday February 2, 2024, or emailed to pvollert@wirapids.org. Proposals that are mailed shall be in a sealed envelope that is marked "RAW UNSCREENED COMPOST PROPOSAL". Proposals that are emailed shall have the same in the subject line of the email.

Proposals received after 2:00pm will not be considered.

SALE OF RAW UNSCREENED COMPOST**THE PROPOSALS SHALL BE PER CUBIC YARD OF MATERIAL**

All proposals submitted shall be in accordance with the Minimum Specifications listed on the following sheets, dated the same as this sheet. Additional descriptive literature shall accompany any quotes.

All proposals shall be submitted on the Proposal Form furnished by this City.

The City of Wisconsin Rapids, Wisconsin reserves the right to reject any or all proposals, and to accept the proposal or portion of that they deem most advantageous to the City.

If you have any questions concerning proposals, please contact Paul Vollert, Public Works Superintendent at 421-8218, or email pvollert@wirapids.org

Paul Vollert
Public Works Superintendent
City of Wisconsin Rapids



PUBLIC WORKS DEPARTMENT
1411 CHASE STREET
WISCONSIN RAPIDS, WI 54495
(715) 421-8218 FAX (715) 421-8281

GENERAL PROCEDURE

To comply with the Notice of Proposals dated January 15, 2024, the following General Procedure and Specifications are to govern.

All proposals must be in the office of the Public Works Superintendent, City Garage, 1411 Chase Street Wisconsin Rapids, Wisconsin 54495 by 12:00 noon, Friday February 2, 2024, or emailed to pvollert@wirapids.org. Proposals that are mailed shall be in a sealed envelope that is marked "RAW UNSCREENED COMPOST PROPOSAL". Proposals that are emailed shall have the same in the subject line of the email.

All Proposals received after 12:00pm will not be accepted.

Proposals must be properly identified by giving the name and address of the person or Vendor. Each proposal must be in a separate sealed container or envelope and marked "RAW UNSCREENED COMPOST" on the outside envelope or subject line if emailed to pvollert@wirapids.org.

All proposals must be entered and submitted on the **PROPOSAL FORM(s)** furnished by the city. Only proposals submitted on these forms will be considered for award purposes. Vendors shall attach additional information to their proposal, as they deem advisable and necessary for the benefit of the Committee in assembling comparative specifications.

The successful person or vendor will be required to sign a purchase agreement for the amount and unit price as specified on their proposal. The agreement shall also include a copy of the specifications and proposal form,

No quotes will be accepted unless the above items are included.

The city reserves the right to accept or reject all or portions of the proposal if agreed upon by both parties.



PUBLIC WORKS DEPARTMENT

1411 CHASE STREET
WISCONSIN RAPIDS, WI 54495
(715) 421-8218 FAX (715) 421-8281

SPECIFICATIONS

The City of Wisconsin Rapids operates two compost sites within the city. The West Side is located at the intersection of 17th Ave North and Engel Road and the East Site is located at the intersection of STH 54 and CTH W. Compost is generated at city compost sites from residents, nonresidents and contractors from within the general Wisconsin Rapids area. Compost can be, grass clippings, garden waste, leaves, pine needles or a mixture of any of the above items that was collected at our sites from April – November of 2023.

West side site has two piles:



55' x 55' x 12'
1344 cy



90' x 35' x 12'
1400 cy

Piles consist of a mixture of material specified above. Pile may also contain paper leaf bags that would have been collected in November of 2023 that should be significantly broken down.

East side site also has two piles:



260' x 30' x 12'
3467 cy



69' x 30' x 12'
916 cy

Larger pile is a small mixture of grass and leaves, but majority of the pile is leaves. Smaller pile is grass and leaves from spring and early summer that needed to be separated from the other pile due to this portion of the pile generating enough heat to start on fire multiple times.

Proposals shall include the cost to haul material off of the sites. Material needs to be removed from the sites by Monday April 8, 2024. Extensions may be granted if conditions are not warranted to open the sites by April 15, 2024.

Measurements above are estimates for rough calculations. Material is to be billed by truck load measurement, city and vendor to come up with an agreed upon volume per truck load, and truck counts to be turned in at the end of each day of trucking. City to load from 7:30am – 2:30pm, Monday – Friday on days that that there is no snow predicted. Hours may be adjusted if city can accommodate. Minimum bid is figured for material to be hauled out at a minimum of 120 cy per hour. Vendor has the option to submit a credit request to allow vendor to load themselves.

If Vendor chooses to load themselves, they will need to maintain general liability coverage in the amount of \$1,000,000 - general aggregate, \$500,000 - personal injury, \$500,000 - each occurrence limit; and shall file a “Certificate of Insurance” with the City Public Works Superintendent as evidence of having the required insurance coverage. The City shall be listed as an additional insured. The proposer shall require subcontractors, if any, not protected under the contractor’s insurance policies, to take out and maintain insurance as stated above.

The proposer must agree to indemnify, defend, and hold harmless the City of Wisconsin Rapids its officers, elected officials, employees, and agents from and against any and all liability, loss, damage expenses, costs, including attorney fees arising out of the activities performed as described herein, caused in whole or in part by any negligent act or omission of the

applicant/organization, anyone directly or indirectly employed by any of them or anyone whose acts may be liable, except where caused by the sole negligence or willful misconduct of the City.

Proposal to include the amount of each material that is desired. Minimum bid shall be \$3.00 which includes loading by city staff.

Sale of Material will be invoiced monthly, with payment to be made within 30 days of invoice. Material will be subject to Wisconsin and Wood County sales tax of 5.5% unless a 2024 Wisconsin sellers permit is submitted and on file.

Proposals to be reviewed and approved at the February 8th Wisconsin Rapids Public Works meeting, with final approval by the Wisconsin Rapids Common Council on February 20nd. Material removal could begin as soon as February 22, 2024 assuming all necessary information is turned in and approved.



PUBLIC WORKS DEPARTMENT
1411 CHASE STREET
WISCONSIN RAPIDS, WI 54495
(715) 421-8218 FAX (715) 421-8281

PROPOSAL FORM

BIDS DUE: 12:00 noon, Friday February 2, 2024

The undersigned hereby proposes to the City of Wisconsin Rapids the following:

Purchase Raw Unscreened Compost from the City of Wisconsin Rapids that was generated at city compost sites from residents, nonresidents and contractors from within the general Wisconsin Rapids area.

WESTSIDE COMPOST SITE

2,750 CUBIC YARDS \$ _____
Mixture of yard waste and leaves

**PER CUBIC YARD
(TRUCK LOAD MEASURE)**

I REQUEST TO PURCHASE _____

CUBIC YARDS OF MATERIAL

OPTION: CREDIT PER CUBIC YARD SELF LOAD

\$ _____

**PER CUBIC YARD
(TRUCK LOAD MEASURE)**

EASTSIDE COMPOST SITE

3,467 CUBIC YARDS \$ _____
Mixture of yard waste and leaves

**PER CUBIC YARD
(TRUCK LOAD MEASURE)**

I REQUEST TO PURCHASE _____

CUBIC YARDS OF MATERIAL

916 CUBIC YARDS \$ _____
Mostly yard waste

**PER CUBIC YARD
(TRUCK LOAD MEASURE)**

I REQUEST TO PURCHASE _____

CUBIC YARDS OF MATERIAL

OPTION: CREDIT PER CUBIC YARD SELF LOAD

\$ _____

**PER CUBIC YARD
(TRUCK LOAD MEASURE)**

Material purchased will be subject to Wisconsin and Wood County Sales Tax 5.5% unless a Wisconsin Sellers permit is submitted and on file with the City.

Date of proposal: _____

Telephone Number: _____

Name of Firm

Signed by and Title of Signer

Address

City, State, Zip Code



**PUBLIC WORKS
DEPARTMENT**
1411 CHASE STREET
WISCONSIN RAPIDS, WI 54495
(715) 421-8218 FAX (715) 421-8281

PROPOSAL RESULTS RAW UNSCREENED COMPOST

DATE MAILED: 1/15/2024

DATE DUE: 2/2/2024 12:00 NOON

	KAFKA TRUCKING MOSINEE, WI	HSU ORGANICS WAUSAU, WI	WOLOSEK LANDSCAPING WISCONSIN RAPIDS, WI	BUSY BEE COMPOST KNOWLTON, WI
WESTSIDE				
2750 CUBIC YARDS PRICE PER CY				
QUANTITY DESIRED				
CREDIT FOR SELF LOAD				
EASTSIDE				
3467 CUBIC YARDS PRICE PER CY				
QUANTITY DESIRED				
CREDIT FOR SELF LOAD				
916 CUBIC YARDS PRICE PER CY				
QUANTITY DESIRED				
CREDIT FOR SELF LOAD				

Opened 2/2/2024 BY PAUL VOLLERT

PUBLIC WORKS
RECOMMENDATION: _____

COMMITTEE
RECOMMENDATION: _____

TOTAL BID:



**PUBLIC WORKS
DEPARTMENT**
1411 CHASE STREET
WISCONSIN RAPIDS, WI 54495
(715) 421-8218 FAX (715) 421-8281

Requestors Name:

Paul Vollert, Public Works Superintendent

Referral Language:

Review and consider setting rates for Contractor and Non-Resident compost site passes.

Background Information:

Contractor Compost pass rates were last adjusted in 2022 to the current rate structure of \$300.00 for City of Wisconsin Rapids based businesses and \$400.00 for non-City of Wisconsin bases business. Each rate included two passes and additional pass is \$25.00 per pass. Prior to 2022 it was \$150.00 for a Contractor pass. Based off of gate keeper records, Contractors represent 5%-6% of the usage of the sites combined over the last three years over the days that they are working.

Non-Resident compost site rates were last adjusted in 2022 to the current rate of \$55.00 per pass. Prior to that the rate had been set to \$50.00 per pass since at least 2018. Based off of records kept by the gate keepers, non-residents represent 24% - 27% of the usage of the sites combined over the last three years.

Recommendation:

Set the Contractor Compost site pass rates as follows:

City of Wisconsin Rapids based Landscape Contractor	\$325.00 for two passes \$25.00 for each additional
Non City of Wisconsin Rapids based Landscape Contractor	\$450.00 for two passes \$25.00 for each additional

City of Wisconsin Rapids based Tree Care Contractor	\$500.00 for two passes \$25.00 for each additional
Non City of Wisconsin Rapids based Tree Care Contractor	\$550.00 for two passes \$25.00 for each additional

Set the Non Resident Compost site passes to \$65.00



Public Works Committee

Date of Request: 1/19/2024

Requestor: Joe Eichsteadt, City Engineer

Request/Referral: Review bid results for the 2024 Asphalt Paving Contract and consider awarding the project to the low, qualified contractor.

Background information:

The Bid Opening is set for Thursday, February 8th at noon. Bid results will be provided at the meeting.

2024 Project List

Lincoln St (E Riverview Expressway to E Grand Ave)

9th St S (Chestnut St to Peach St)

Wylie St (8th St N to 12th St N)

Dixon Parking Lot

Oak St cul-de-sac (east of 20th St)

Pavement Replacement

- a. Birch St (3rd St S to 4th St S)
- b. Birch St (Garfield St to Lincoln St)
- c. 20th St S (Griffith Ave to Two Mile Ave)

Overlay

- a. Birch St (4th St S to Garfield St)
- b. 13th St S (Chestnut St to Daly Ave)
- c. East G St (13th St S to 16th St S)

Options available:

Action you are requesting the committee take: Award the project to the low, qualified bidder.

How will the item be financed? Public Works Construction Fund.



Public Works Committee

Date of Request: 1/19/2024

Requestor: Joe Eichstadt, City Engineer

Request/Referral: Review bid results for the 2024 Concrete Contract and consider awarding the project to the low, qualified contractor.

Background information:

The Bid Opening is set for Thursday, February 8th at 11am. Bid results will be provided at the meeting.

2024 Project List

Lincoln St - E Riverview Expressway to E Grand Ave
9th St S - Chestnut St to Peach St
Wylie St - 8th St N to 12th St N
Oak St Cul-de-sac
Dixon (4th Ave) Parking Lot
20th St S (Griffith Ave to Two Mile Ave) Curb Maintenance
Birch St (3rd St S to Lincoln St) Curb Maintenance
Concrete Maintenance (Curb & Sidewalk)
Concrete Pavement Patching

Options available:

Action you are requesting the committee take: Award the project to the low, qualified bidder.

How will the item be financed? Public Works Construction Fund.



Public Works Committee

Date of Request: 1/31/2024

Requestor: Joe Eichstadt, City Engineer

Request/Referral: Review and consider modifying the westbound traffic control at the intersection of Two Mile Ave and 1st St S to allow right turns without stopping.

Background information:

See attached traffic study.

Options available: 1.) Update signage to include Right Turn, No Stop. 2) Leave intersection as is

Action you are requesting the committee take: Approve allowing right turns without stopping for westbound traffic on Two Mile Ave at 1st St S.

How will the item be financed?

Two Mile Avenue and 1st Street South Intersection Study

Background

Location

Two Mile Ave and 1st St S are both classified as minor arterial roads. The speed limit on 1st St S is 30 mph and the speed limit on Two Mile Ave is 25 mph. The two roads intersect forming a 90° turn, with 1st St S extending north and Two Mile Ave extending east. There are driveways to the South Wood County Airport at the south and west sides of the intersection. Currently, there are stop signs on every street except 1st St S.

Accidents

There have been no accidents recorded at the intersection in the past ten years.

Study

Method

The traffic data for this study was collected using both an automatic traffic counting device and in-person observation. A traffic counting device was installed at the intersection and collected data on both streets over a period of two weeks.

Observation

The intersection was examined for line-of-sight obstructions within the vision triangle. Vision triangles are areas in the corners of intersections where objects could obstruct a driver's view of cross traffic. These areas should be kept clear of plants or objects between 2 ½ to 10 feet tall. Because Two Mile Ave and 1st St S are both minor arterial roads the legs of the vision triangle extend 40 feet out from the intersection of the right-of-way. No vision obstructions were observed at this intersection.

Most vehicles travelling through the intersection were observed turning onto 1st St N or Two Mile Ave. At the time of in-person observation the south driveway entrance was closed, and the airport parking lot had only 3 parked vehicles.



Figure 1 Intersection of Two Mile Ave and 1st St S

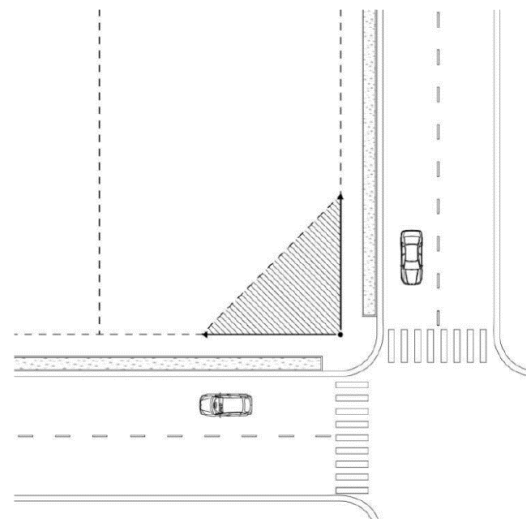




Figure 2 Two Mile Ave Westbound



Figure 3 Airport Driveway Eastbound



Figure 4 Airport Hanger Dr Northbound



Figure 5 1st St Southbound

Results

An automatic traffic monitoring device collected data on both vehicle volumes and vehicle speeds. Traffic counts are reported as the number of vehicles per hour averaged over the eight-hour interval with the highest traffic volume for the day. Vehicle speeds are reported as the 85th percentile speed which is the speed the fastest 15% of vehicles exceeded.

Table 1 Traffic Data

Two Mile Ave	
85 th Percentile Speed (mph)	30
Average Annual Daily Traffic	1739

Recommendation

An “Except Right Turn” sign should be added on Two Mile Ave., to better match the current traffic pattern. Most of the vehicles at the intersection were turning left onto Two Mile Ave or right onto 1st St. The number of vehicles traveling in and out of the airport driveways was much lower. An “Except Right Turn” sign would allow vehicles to more efficiently travel through the intersection.



Figure 6 Recommended sign configuration.



Public Works Committee

Date of Request: 1/31/2024

Requestor: Joe Eichsteadt, City Engineer

Request/Referral: Review and consider modifying the eastbound traffic control at the intersection of High St and 4th Ave N to allow right turns without stopping.

Background information:

See attached traffic study.

Options available: 1.) Update signage to include Right Turn, No Stop. 2) Leave intersection as is

Action you are requesting the committee take: Approve allowing right turns without stopping for eastbound traffic on High St at 4th Ave N.

How will the item be financed?



Figure 2 4th Avenue Southbound, Control: stop sign and “oncoming traffic does not stop” sign



Figure 3 4th Avenue Northbound, Control: none



Figure 4 High Street Eastbound, Control: stop sign

Results

An automatic traffic monitoring device collected data on both vehicle volumes and vehicle speeds. Traffic counts are reported as the number of vehicles per hour averaged over the eight-hour interval with the highest traffic volume for the day. Vehicle speeds are reported as the 85th percentile speed which is the speed the fastest 15% of vehicles exceeded.

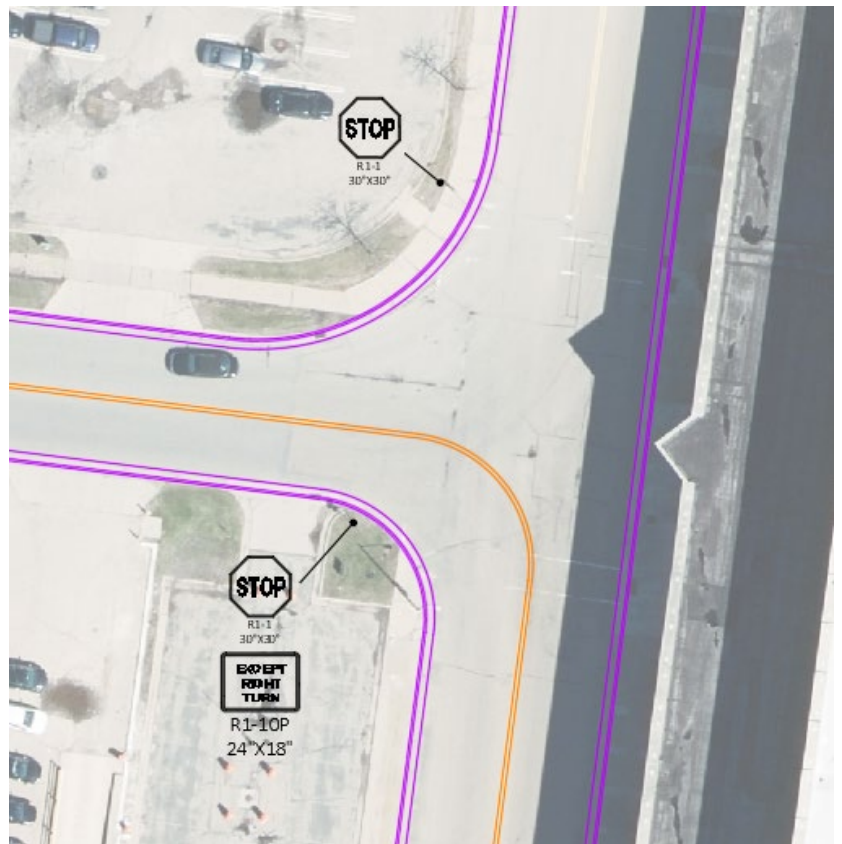
Table 1 Traffic Data

Volume (ADT)	
High St	1528
4 th Ave (North Side)	Pending

85 th Percentile Speed (MPH)	
High St	27
4 th Ave (North Side)	Pending

Recommendation

To better match the observed traffic pattern the stop sign on High Street could be modified with an “EXCEPT RIGHT TURN” sign. This change would move vehicles more efficiently through the intersection. Optionally, a centerline turn could be painted through the intersection to supplement the sign.





Public Works Committee

Date of Request 1/31/2024

Requestor: Joe Eichsteadt, City Engineer

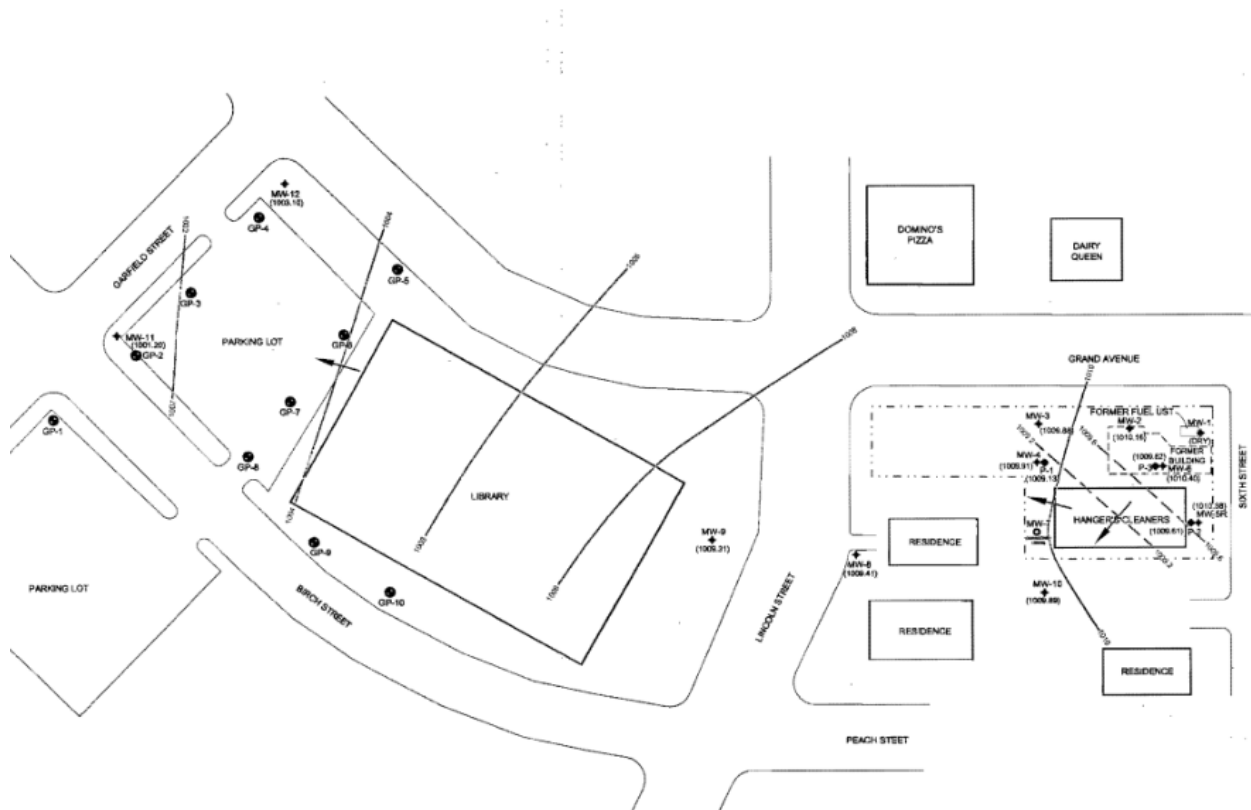
Request/Referral: Review and consider proposals for hazardous material services related to the 2024 Lincoln Street project.

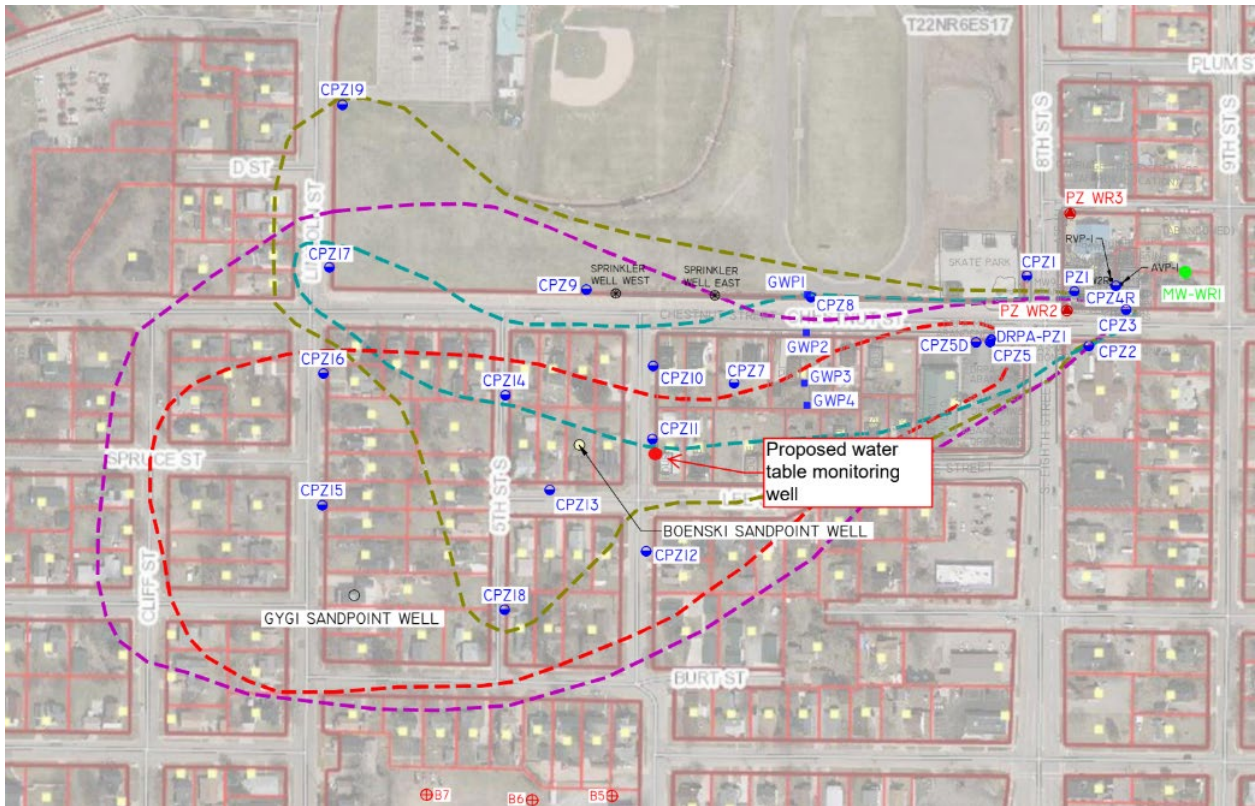
Background information:

Two areas were flagged in our permitting of the Lincoln St project that involve groundwater contamination from two sources: dry cleaner on E Grand Ave and dry cleaner / gas station at 8th St and Chestnut St.

And since our utility replacement may involve working within the proximity of the groundwater table there would be onsite testing and evaluation required at the time of construction to make sure the handling, processing and disposal of the material is handled properly.

A request for proposal (RFP) was sent out to firms we have worked with in the past. Proposals are expected on Wednesday, February 7th and those numbers will be provided at the meeting.





See attached RFP.

Options available:

Action you are requesting the committee take: Consider selecting a consultant based on proposals received.

How will the item be financed? Public Works Construction Fund



ENGINEERING DEPARTMENT
444 West Grand Avenue
Wisconsin Rapids, WI 54495-2780
PHONE - 715.421.8205

REQUEST FOR PROPOSALS

City of Wisconsin Rapids, WI

**Environmental Services
For**

Lincoln Street Project

Due: February 7th, 2024

Submit Proposals to:
Joe Eichsteadt, PE
City of Wisconsin Rapids
444 W Grand Ave
Wisconsin Rapids, WI 54495
jeichsteadt@wirapids.org
Phone: 715-421-8251



ENGINEERING DEPARTMENT
444 West Grand Avenue
Wisconsin Rapids, WI 54495-2780
PHONE - 715.421.8205

The City of Wisconsin Rapids is seeking proposals for environmental consulting services necessary for proper handling, management, and disposal of hazardous materials (contaminated soils and/or groundwater) potentially encountered during the Lincoln Street (Riverview Expressway - Grand Avenue) reconstruction project. The City is interested in 'turn-key' consulting services for the aforementioned work.

The City of Wisconsin Rapids is proposing to reconstruct Lincoln Street (Riverview Expressway - Grand Avenue) during the 2024 construction season as a municipal project. Work on the Lincoln Street corridor could start as early as mid-March 2024 and will likely continue through a majority of the 2024 construction season.

Underground utilities (storm sewer, water main, and sanitary sewer) will be replaced as part of the Lincoln Street project. It is anticipated that contaminated soils and/or groundwater may be uncovered during the installation of the proposed underground utilities. The City's Street Dept. will need the aforementioned consulting services to ensure proper handling and disposal of any hazardous materials encountered. The City has completed some initial research into the aforementioned hazardous materials along Lincoln Street and has included supporting documentation for consultant's review/download at the following link:

Lincoln Street - <https://drive.google.com/drive/folders/11z5tTYVPaC7XEnpFYsI0tLKCDdcx9XZx?usp=sharing>

Also found in the link above are preliminary construction plans for the Lincoln Street project available for download and review.

As previously mentioned, the City is requesting proposals for environmental consulting services necessary for the proper handling, management, and disposal of contaminated soils and/or groundwater potentially encountered during the installation of underground utilities along the Lincoln Street corridor during the 2024 construction season. Proposal shall be a typed document and shall include a scope of services to be provided by consultant necessary to comply with all applicable state and federal requirements. Proposals shall also include estimated time and costs for any meetings or deliverables the consultant deems necessary. Each proposal shall also include the consultant's statement of qualifications. The statement of qualifications shall include any of the consultant's similar project experience.

Consultant's proposal shall also include a statement of understanding of the City's overall approach and information included in this email. A summary shall also be included in the proposal providing the Consultant's overall approach to the project and shall list any assumptions used in completing the proposal. **Each proposal shall include a time/materials hourly rate as well as an estimated per incident cost (and any assumptions used) necessary to properly manage the required and safe handling and disposal of any encountered hazardous materials along the Lincoln Street corridor.**

We are requesting completed proposals by **Wednesday, February 7th, 2024.**

Selection of consultant is anticipated to be by February 21st, 2024.

Proposals should be submitted to Joe Eichsteadt, P.E. (City Engineer) at 444 W. Grand Avenue, Wisconsin Rapids, WI 54495-2780 or jeichsteadt@wirapids.org

For questions about this RFP, please contact Joe Eichsteadt at 715.421.8251 or email at jeichsteadt@wirapids.org



Public Works Committee

Date of Request: 1/19/2024

Requestor: Joe Eichsteadt, City Engineer

Request/Referral: Discuss and consider Flashing Yellow Arrows at Washington St & STH 54 as well as 8th St and E Riverview Expressway.

Background information:

Flashing Yellow Arrows (FYA)


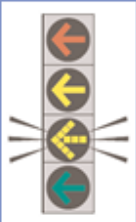


A Better Left-Turn Signal

Safer
A national study demonstrated drivers had fewer crashes with the flashing yellow left-turn arrow than with the traditional yielding left-turn indication.

Less Delay
You have more opportunities to make a left turn with the flashing yellow left-turn arrow than with the traditional yielding left-turn indication, which keeps you moving.

More Flexible
The new display provides traffic engineers with more options to handle variable traffic volumes.

Signal Display Changes

Traditional	New
	
	

Copied from a City of Madison brochure.

The approximate cost at each location would be \$100,000 per intersection.

Funding could possibly be obtained through the DOT's SISP program, similar to the W Grand, Chase and High St intersections. Recent grants may not prove favorable in receiving more funds. However, applications are relatively easy to submit.

Installation costs are expected to cost approximately \$100,000 per intersection.



Estimate 2020 (values).

Riverview Expressway & 8th Street Estimate of Quantities				Estimated Unit Price	Extension	TAPCO Unit Price
WisDOT Bid Item No.	Description	Quantity	Unit			
	Mobilization	1	LS	\$ 25,000.00	\$ 25,000.00	
204.0110	Remove Asphaltic Surface - West Median	2.5	SY	\$ 35.00	\$ 87.50	
204.0195	Removing Concrete Bases	1	EACH	\$ 1,425.00	\$ 1,425.00	
465.0105	Asphaltic Surface - West Median	0.5	TON	\$ 200.00	\$ 100.00	
620.0300	Concrete Median Sloped Nose Type 2	6	SF	\$ 100.00	\$ 600.00	
637.2210	Install R10-50L	2	EACH	\$ 35.00	\$ 525.00	
637.2210	Install R10-3ED	2	EACH	\$ 35.00	\$ 65.63	
637.2210	Install R10-3ER	2	EACH	\$ 35.00	\$ 65.63	
637.2210	Install R10-3EL	2	EACH	\$ 35.00	\$ 65.63	
638.2602	Removing Signs Type II	8	EACH	\$ 25.00	\$ 200.00	
646.7405	Marking Crosswalk Paint Transverse Line 6-Inch	100	LF	\$ 10.00	\$ 1,000.00	
646.8205	Marking Island Nose Paint	1	EACH	\$ 200.00	\$ 200.00	
652.0225	Conduit Rigid Nonmetallic Schedule 40-2 Inch	5	LF	\$ 7.00	\$ 35.00	
654.0101	Concrete Base Type 1	1	EACH	\$ 1,000.00	\$ 1,000.00	
655.0210	Cable Traffic Signal 3-14 AWG	114	LF	\$ 1.45	\$ 165.30	
655.0230	Cable Traffic Signal 5-14 AWG	202	LF	\$ 1.55	\$ 313.10	
655.0260	Cable Traffic Signal 12-14 AWG	648	LF	\$ 3.50	\$ 2,268.00	
655.0270	Cable Traffic Signal 15-14 AWG	226	LF	\$ 4.00	\$ 904.00	
655.0280	Cable Traffic Signal 19-14 AWG	264	LF	\$ 4.50	\$ 1,188.00	
657.0100	Pedestal Base Type 1	5	EACH	\$ 325.00	\$ 1,625.00	
657.0425	Traffic Signal Standards Aluminum 15-FT	5	EACH	\$ 750.00	\$ 3,750.00	
658.0174	Traffic Signal Face 4S 12-Inch	8	EACH	\$ 890.00	\$ 7,120.00	
658.0416	Pedestrian Indicator 16-Inch With Countdown Timer	8	EACH	\$ 505.00	\$ 4,040.00	\$ 350.00
658.0500	Pedestrian Push Buttons	2	EACH	\$ 600.00	\$ 1,200.00	\$ 495.00
658.5069	Pedestrian Signal Mounting Hardware	1	LS	\$ 3,000.00	\$ 3,000.00	
658.5069	Signal Mounting Hardware	1	LS	\$ 5,000.00	\$ 5,000.00	
	Pedestrian Push Button Telescoping Extension Bracket - 13-24 Inch - Campbell Company 5030240L	1	EACH	\$ 500.00	\$ 500.00	
	Remove and Salvage Pedestrian Indicator	1	LS	\$ 1,000.00	\$ 1,000.00	
	Remove and Salvage Traffic Signal Assembly	1	LS	\$ 2,000.00	\$ 2,000.00	
	Remove and Reinstall Existing Traffic Signal Equipment	1	LS	\$ 2,500.00	\$ 2,500.00	
	McCain FLeX controller (NEW CONTROLLER)	1	EACH	\$ 9,000.00	\$ 9,000.00	
	Traffic Signal Controller & Timing Implementation	1	LS	\$ 5,000.00	\$ 5,000.00	
				SUBTOTAL	\$ 80,942.78	
				20% Contingency	\$ 16,188.56	
				ESTIMATED TOTAL	\$ 97,131.33	

Options available: Consider applying for a SISF grant through the WI DOT with applications due in April. Consider adding projects into future budgets.

Action you are requesting the committee take:

How will the item be financed? TBD

PUBLIC WORKS COMMITTEE REFERRAL LIST:

2024 (2/2/2024)

1. Request from Alderperson Tom Rayome to discuss the future of 8th St S. (2016)
2. Request from Rayome for Quiet Zones for trains on the east side of city. (2023)
3. Review the Change Order policy and consider updates. (2023)
4. Consider a request to allow residential properties additional garbage bins for an additional fee. (2023)
5. Request from Melanie Minervini (1722 3rd St N) to review, revise and update Ch 27 Parking regarding parking meters and overnight parking 27.13(4)(e).
6. Review and consider approving the State / Municipal three-party agreement for the 8th St S and Wood Ave pedestrian crossing project (DOT Project # 6999-11-15/85).