

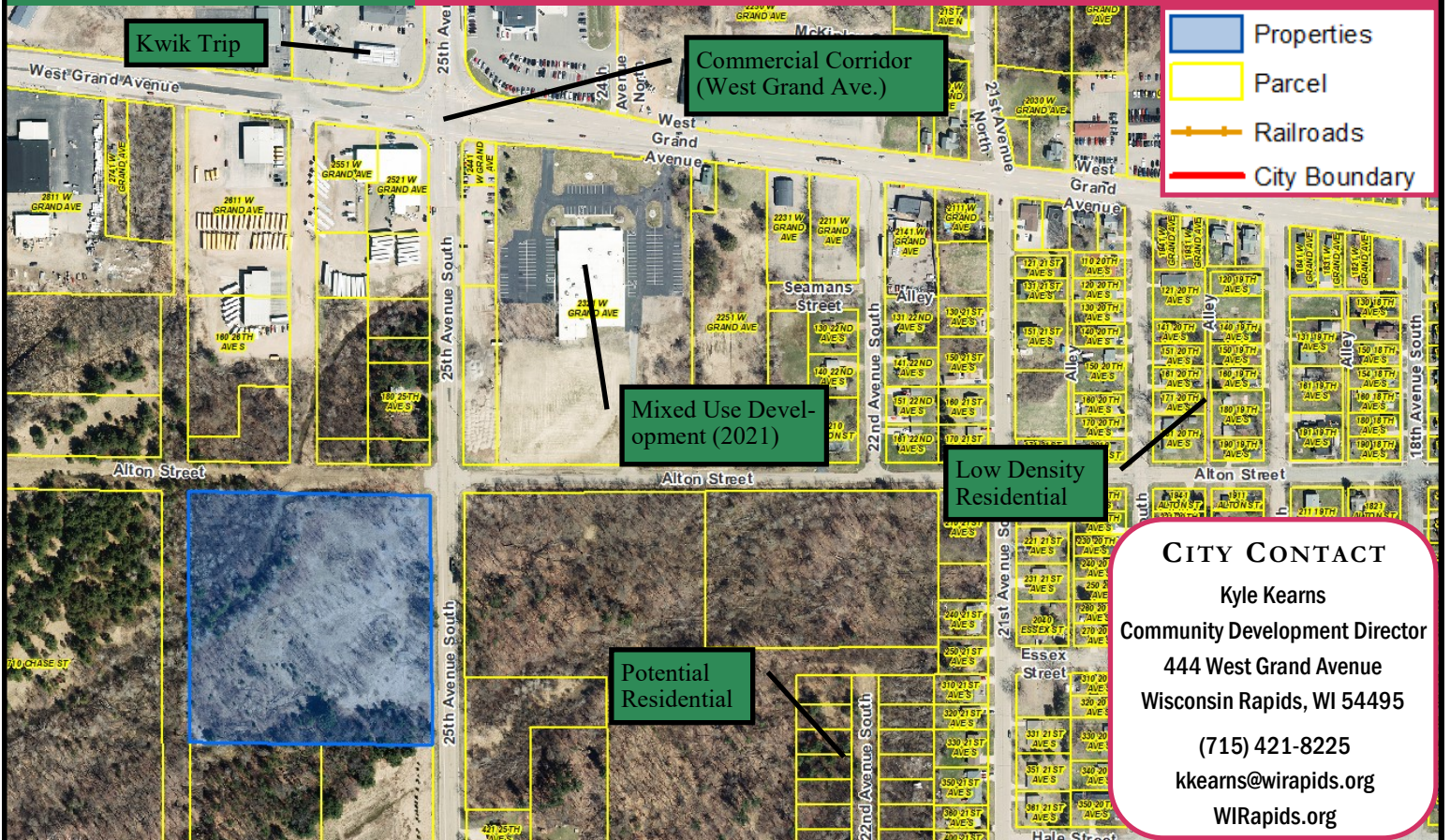
Cranberry Creek

AVAILABLE SITE

PROPERTY DETAILS

Use: Vacant Land
 Site: 8.0 Acres
 (2 ac. wetland)
 Zoning: R-2 Mixed Residential
 Traffic Counts: 8400 AADT (Hwy 73)
 1100 AADT (25th Ave. S.)

- * Highway 73 = 1/4 mi.
- * Highway 54 = 1.5 mi.
- * Quaint Residential Setting
- * Proximity to Commercial
- * City owned – potential for cottage housing development



CITY CONTACT
 Kyle Kearns
 Community Development Director
 444 West Grand Avenue
 Wisconsin Rapids, WI 54495
 (715) 421-8225
 kkearns@wirapids.org
 WIRapids.org