

East Commerce Center



AVAILABLE SITES

PROPERTY DETAILS

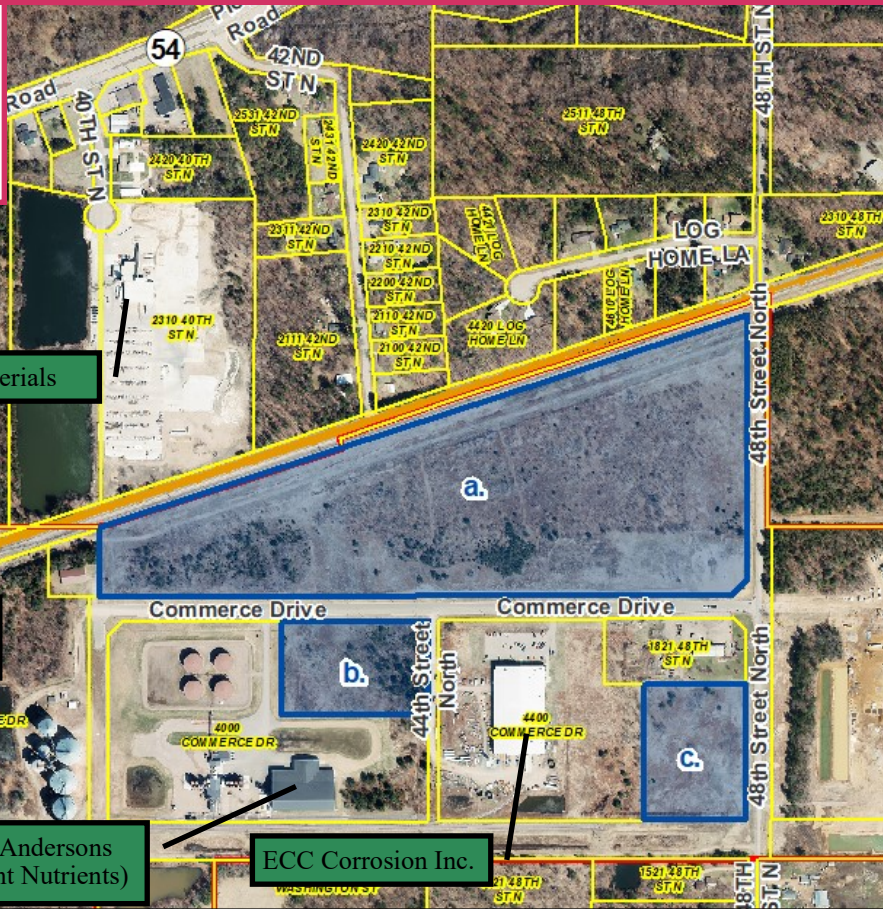
Use: Vacant Land
 Sites: a. 41.24 Acres
 b. 5.12 Acres
 c. 5.02 Acres
 Zoning: M-1 Light Industrial
 Traffic Counts: 11,300/Day (Hwy 54)

- * Municipal Airport = 6 mi.
- * Highway 54 = 0.75 mi.
- * Interstate 39 = 13 mi.
- * Rail Access = CN
- * TID/TIF District encompasses entire park.
- * City Owned

"Shovel Ready"



- Properties
- Parcel
- Railroads
- City Boundary



CITY CONTACT
 Kyle Kearns
 Community Development Director
 444 West Grand Avenue
 Wisconsin Rapids, WI 54495
 (715) 421-8225
 kkearns@wirapids.org
 WIRapids.org

County Materials

Nekoosa Coated

The Andersons (Plant Nutrients)

ECC Corrosion Inc.

Matalco (2020) (Aluminum Billet)