

Griffith Ave. & 16th St. S.

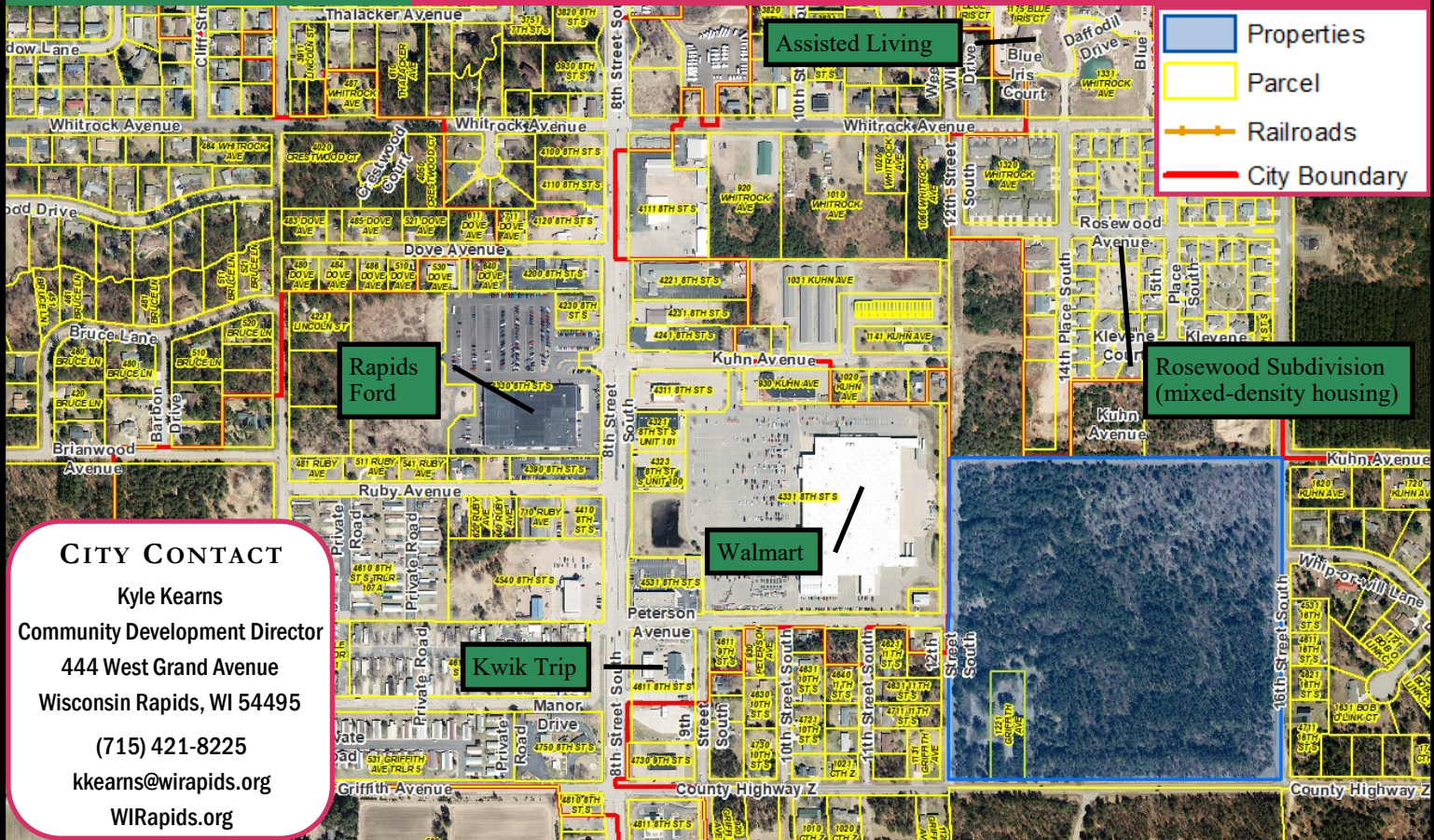


AVAILABLE SITE

PROPERTY DETAILS

Use: Vacant Land
 Site: 38.72 Acres
 Zoning: County Zoned
 (requires annex)
 Traffic Counts: 20300 AADT
 (8th St. S.)
 5500 AADT
 (Griffith Ave.)

- * 8th Street S. = 1/4 mi.
- * Utilities Adjacent
- * Adjacent to Parkland
- * Mixed-Density Res. Potential
- * Proximity to Commercial
- * City owned – requires annexation



CITY CONTACT
 Kyle Kearns
 Community Development Director
 444 West Grand Avenue
 Wisconsin Rapids, WI 54495
 (715) 421-8225
 kkearns@wirapids.org
 WIRapids.org