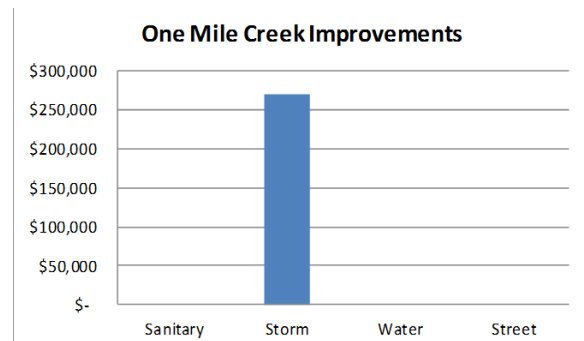
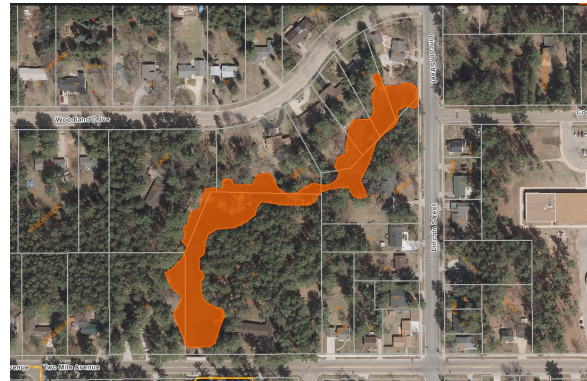


Public Works Capital Improvements

One Mile Creek Improvements PROJECT SUMMARY

- **Project Area: 80,000 Sq. Ft.**
- **Construction Year: 2020**
- **Total Cost of Improvements: \$270,000**
- **Classification: Creek**



Project Need

The WDNR TMDL (Total Maximum Daily Load) implementation is forthcoming which places Total Phosphorus (TP) reductions on all storm water discharges from City of a certain size. The TMDL is also impacting other Cities and waste water treatment facilities across the Wisconsin River watershed. The City will be required to obtain TP reductions via storm water treatment which can be partly accomplished with storm water ponds.

Value

Since the ponds are already in place, the modeled reduction represents an equivalent value of \$2.0 million or more. While this pond is an existing facility, the City is not currently taking credit for their sediment reduction capabilities – in general, the WDNR does not accept the use of BMPs that in-line within a navigable public waterway such as One Mile Creek. The WDNR has affirmed that credit will be granted if the City has legal access and rights to performing dredging activities and installs a WDNR permitted dam at the water wheel location. This pond reduces Total Suspended Solids (TSS) city-wide by 3.26% and Total Phosphorus (TP) by 3.2%.

Status of Project

Currently, a draft easement document has been prepared as previous owner engagement was very positive with owners being in favor of the project. The final easement document is almost complete and will be sent to the property owners in the near future.