

**NOTICE OF PUBLIC MEETING****Public Works Committee/**

Tom Rayome, Chairperson

Ryan Austin, Secretary

Dennis Polach

Mayor Blaser

Notice is hereby given of a meeting of the Public Works Committee to be held in the **Council Chambers** at City Hall, 444 West Grand Avenue, Wisconsin Rapids, at **5:00 p.m. on Thursday, December 7th, 2023**. The meeting will be streamed live on the City of Wisconsin Rapids Facebook page and will also be broadcast live on Charter Cable Channel 985 and Solarus HD Cable Channel 3. If a member of the public wishes to access this meeting live via Zoom audio conferencing, you must contact the City Clerk at least 24 hours prior to the start of the meeting to coordinate your access. This meeting is also available after its conclusion on the City's Facebook page and Community Media's YouTube page, which can be accessed at [www.wr-cm.org](http://www.wr-cm.org). It is possible that members of the Committee may appear remotely via video or audioconferencing for this meeting.

**Agenda**

1. Call to order
2. Review Engineering & Street Department Monthly Activity Report.
3. Review and consider adding a street light at the southeast corner of 16<sup>th</sup> Street S and Pepper Avenue.
4. Review and consider adding yield signs at the intersection of 10<sup>th</sup> St S and Peach St.
5. Review Referral List
6. Set Next Meeting Date
7. Adjourn

Tom Rayome, Chairperson

&gt; &gt; &gt; - &lt; &lt; &lt;

The City of Wisconsin Rapids encourages participation from all its citizens. If participation at any public meeting is not possible due to a disability, notification to the city clerk's office at least 48 hours prior to the scheduled meeting is encouraged to make the necessary accommodations. Call the clerk at (715) 421-8200 to request accommodations.



## **PUBLIC WORKS DEPARTMENT**

1411 CHASE STREET  
WISCONSIN RAPIDS, WI 54495  
(715) 421-8218 FAX (715) 421-8281

### **November 2023**

#### ***Refuse and Recycling***

- Garbage Collection estimate 461.52 tons, 448.88 tons in 2022
- Recycling Collection estimate 93.89 tons, 108.31 tons in 2022

#### ***Construction***

##### **Oak Street (East Jackson Street – 16<sup>th</sup> ST N)**

- Project complete except for restoration and removal of two stumps on one property

##### **9<sup>th</sup> Ave (High Street – Freemont)**

- Project complete

##### **Shorewood Terrace (1<sup>st</sup> Street North – Dead End)**

- Project complete except for finish rake topsoil, seed and mulch

##### **Apricot/ Broadway Street Intersection**

- Completed retaining wall, subgrade sidewalk and gravel Apricot Street from Broadway – 11<sup>th</sup>

#### **Items to complete**

- Sidewalk, Curb and Gutter on Apricot, Black dirt Apricot, finish rake topsoil, seed and mulch, Finish Grade and Pave Apricot

#### ***Streets Maintenance***

- Monthly brush pickup
- Rebuilt catch multiple catch basins that had ring failures
- Leaf Collection
- Crushing blacktop at city pit
- Screening Compost at Westside
- Sweep leaves
- Hauled scrap metal to metal recycling
- Hauled junk tires to recycler
- Cut Brush on West river bank
- Checked plow routes for high manholes, low tree branches and other hazards
- Replaced culvert pipe on bike trail
- Worked on one minor snow event
- Assisted Grand Rapids with road shoulders
- Maintained manholes in various locations
- Poured curb and restored green space behind catch basin repairs
- Took Delivery of 900 tons of salt

- Pulverized existing alleys, added material and reshaped and compacted
- Removed failed partial depth repairs on Expressway and replace with asphalt

#### ***Paint and Signs***

- Replace seasonal banners
- Installed signs on Construction projects
- Assisted with painting of Railroad Crossing pavement marking
- Moved advanced warning signs to proper spacing on Railroad Crossing
- Installed at Grade Banner sleeves at approved locations
- Assisted Grand Rapids in some pavement marking needs

#### ***Shop and Repairs***

- Routine service work fleet trucks
- Service Police and Fire's fleet
- Replaced bushings and rods on Single Axle underbody snow plow
- DPF Filter replacement on two loaders
- Replace fuel injector's on third loader
- Check over snow equipment after use during snow event
- Replace hydraulic hoses on Sander that failed



**ENGINEERING DEPARTMENT**  
**444 West Grand Avenue**  
**Wisconsin Rapids, WI 54495-2780**  
 Engineering (715) 421-8205 FAX (715) 421-8291

## ENGINEERING DEPARTMENT Monthly Activity Report

November 2023

### Permits & Degradation

- 19 Permits/Licenses (32 last month) for asphalt paving (0), driveway grades/concrete pour inspections (0), storm water (0), excavating (8), Street Privilege (0), storm connection (0), permit parking (8), banner (0), environmental testing well (0), contractor licenses (3)
  - This year – 253 permits & licenses
- 178 Diggers Locates for Storm Sewer & Sanitary Sewer (254 last month)
  - 2 Emergency locate
- Degradation fees - this year = \$64,136.18
  - This month = \$846.78 (\$10,331.84 last month)

### Traffic

- Stop Sign / Yield Sign Requests – Revisited Yield Sign at 10th St & Peach based upon another complaint and new information.
- Traffic Study
  - Street Light request for Pepper Ave and 16<sup>th</sup> St intersection due to high pedestrian usage at Lincoln HS.
  - Request to allow right turn no stop for westbound traffic on Two Mile Ave at 1<sup>st</sup> St S. Some preliminary research has been done to gather guidance documents. A traffic study has been completed.
- Vision Issues – N/A
- ITS Standalone Signal Grant
  - 2023 Project @ Expy and W Grand Ave started on September 25<sup>th</sup>. Temporary equipment was taken down on 11/29/23 so the new signals are now operational.
  - 2024 Project @ Expy and High St and Expy and Chase St – grant was approved and consultant will be updating plans and rebidding in preparation for 2024 construction.
- Signal complaints
  - Riverview Expressway having to stop at every intersection. Travel time tests were completed the last week of October and results are being analyzed.
  - FYA request for WB left traffic on Expressway at Plover Road
  - Signal adjustments requested at 8<sup>th</sup> St and Expressway for NB lefts
  - A request for traffic signals at 16<sup>th</sup> St S and Expressway to switch quicker for vehicles heading north and south on 16<sup>th</sup> St S AND for the green to stay on longer.
  - Request to make 3<sup>rd</sup> St / Market St / Jackson St intersection an all-way stop.



## ENGINEERING DEPARTMENT

444 West Grand Avenue

Wisconsin Rapids, WI 54495-2780

Engineering (715) 421-8205

FAX (715) 421-8291

- STH 54 & CTH W – too few cars can get through (9/20/2022)
- Signal Equipment
  - Spare cabinet is ordered and is expected to arrive in November (?). This was confirmed on 11/29/23 that the arrival month is moved to January.

Project Designs/Construction underway:

### Maintenance Projects

### 2023 Reconstruction Projects

- 2023 Contracts
  - Sewer Lining Contract – Lining activities are currently underway. Cleaning and televising is complete. Contract was awarded to Insituform Technologies.

### Reconstruction Projects

- Preliminary Survey for 2024 and 2025 Projects
  - Lincoln St (Expressway to Peach St) – 100%
  - Wylie St (8<sup>th</sup> St N to 10<sup>th</sup> St N) – 100%
    - Extension 10<sup>th</sup> St N to 12<sup>th</sup> St N – 100%
  - 14<sup>th</sup> Ave N (W Grand Ave to Fremont St) – 100%
  - McKinley St (8<sup>th</sup> Ave to 14<sup>th</sup> Ave) – 100%
  - E Jackson St (Jackson St Bridge to E Grand Ave) – 99% - survey work started 9/18/23
  - Rudolph Forcemain Discharge Manhole – 100%
  - Dixon Parking Lots – 100%
  - Mead Field Pickle Ball Courts – 100%
- Design for future Projects
  - 9<sup>th</sup> St S (Peach St to Chestnut St) – 99%
  - Lincoln St (Expressway to Peach St) – 55%
    - ROW Plat is 100%
  - Wylie St (8<sup>th</sup> St N to 10<sup>th</sup> St N) – 80%; (10<sup>th</sup> to 12<sup>th</sup> St) – 50%
  - 14<sup>th</sup> Ave N (W Grand Ave to Fremont St) – 40%
  - McKinley St (8<sup>th</sup> Ave N to 14<sup>th</sup> Ave N) – 40%
  - E Jackson St – 0%
  - Rudolph Forcemain Discharge Manhole – 50%
  - Dixon Parking Lot – 75%



**ENGINEERING DEPARTMENT**  
**444 West Grand Avenue**  
**Wisconsin Rapids, WI 54495-2780**  
Engineering (715) 421-8205 FAX (715) 421-8291

- Mead Field Pickle Ball Courts – 0%

### Projects Involving Grants

- 8<sup>th</sup> St S and Wood Ave - Highway safety Improvement Grant (HSIP).
  - Request for Qualifications were sent out on 11/17/23 with a due date of 12/8/23.
  - Design will commence in 2024 with construction proposed in 2025
- 8th St S – Lakewood Ln to Whitrock Ave – DOT is working on selecting a design consultant to begin designing this project.
- Rail Notification – Predictive Mobility Project

### Storm Water Utility

- One Mile Cr. – All easements for the project are now secured.
  - Dredging Permit – As of 11/2/23, the DNR staff have forwarded their approval to their supervisor for final review and signature.
  - Dam Permit – DNR Review staff have been unable to get to the review, but are continuing to update us on the latest review schedule. Their review is expected any day.
- Illicit discharge testing is complete for the year.

### Other Highlights



## Public Works Committee

**Date of Request:** 11/15/2023

**Requestor:** Joe Eichsteadt, City Engineer

**Request/Referral:** Consider adding a street light at the southeast corner of 16<sup>th</sup> Street S and Pepper Ave.

**Background information:**

Policy on Street Lights is attached.

Street Lighting Design Standards:

Table 5 - Recommended Values for Medium Pedestrian Conflict Areas			
Maintained Illuminance Values for Walkways			
	E <sub>avg</sub> (lux/ft)	E <sub>Vmin</sub> (lux/ft)	E <sub>avg</sub> /E <sub>min</sub> *
Pedestrian Areas	5.0/0.5	2.0/0.2	4.0
E <sub>avg</sub> - minimum maintained average horizontal illuminance at pavement			
E <sub>min</sub> - minimum horizontal illuminance at pavement			
E <sub>Vmin</sub> - minimum vertical illuminance at 1.5m above pavement			
*Horizontal only			

Light Meter Tests were conducted on 11/13/2023 at 6:00 am. Lux readings were taken on the crosswalk on 16<sup>th</sup> St with the following results:

- Horizontal at pavement level averaged 5.20 lux (Standard = 5.0 lux for medium pedestrian and 20 for high pedestrian)
- Vertical readings to the north averaged 10.45 lux (Standard = 2.0 lux for medium pedestrian and 10 for high pedestrian)
- Vertical readings to the south minimum of 0.6 lux. NB traffic doesn't see illuminated pedestrians with this low lux value. (Standard = 2.0 lux for medium pedestrian and 10 for high pedestrian)

An existing light exists on the NW corner of the intersection. A complaint came in about several instances that were witnessed where pedestrians were really hard to see in the early morning hours.

WWLC can add a new pole and light in the SE corner of the intersection for \$1800 plus an additional monthly charge for the light unit.

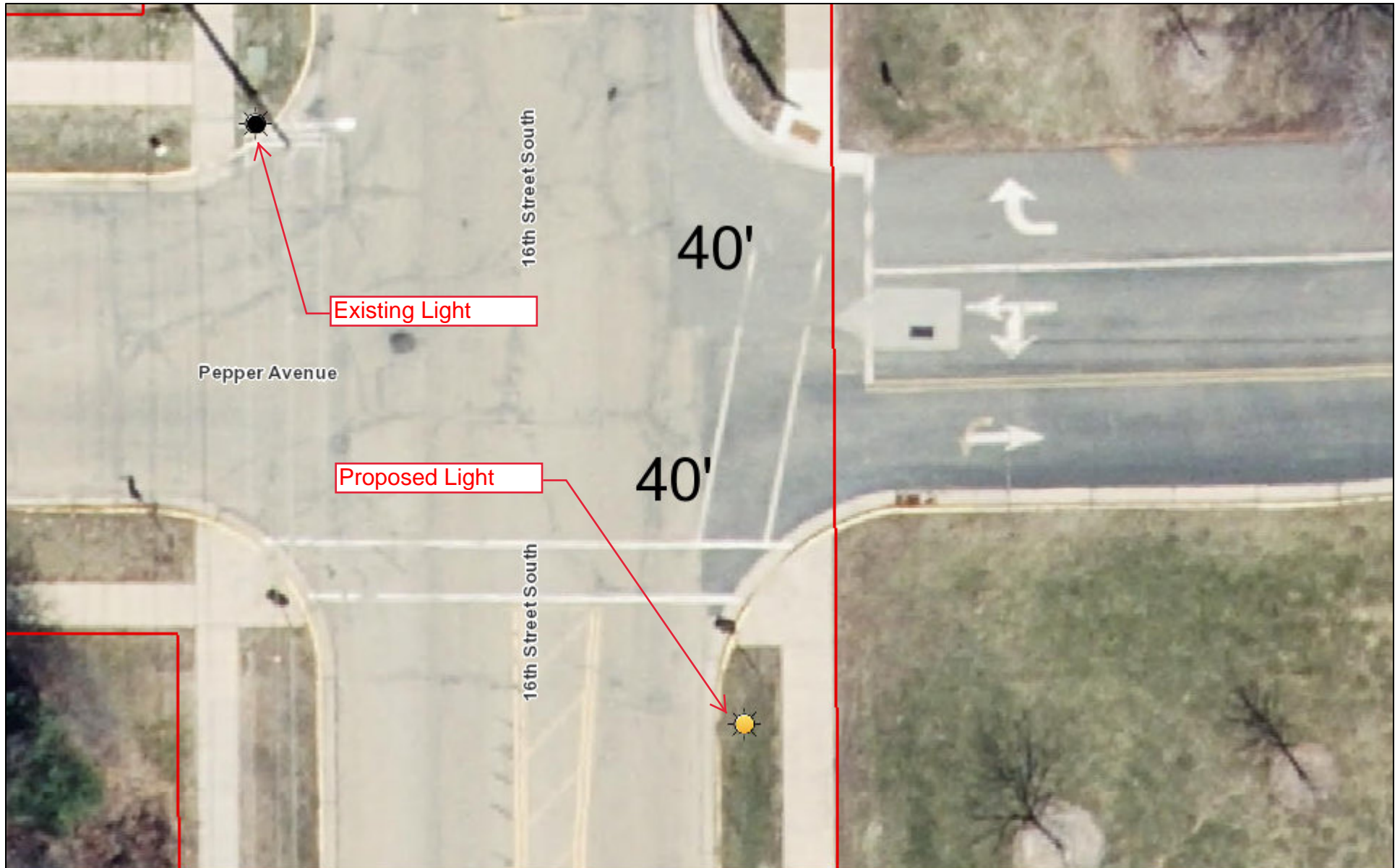
**Options available:** The 2023 budget has \$2,500. The 2024 budget has \$2,500.

**Action you are requesting the committee take:** Based on the design standards and current illuminance it is recommended to install an additional light.

**How will the item be financed?** Traffic Control Budget



# City Of Wisconsin Rapids GIS



11/30/2023, 1:17:55 PM

## Points



Override 1



Override 2



Parcels

City Boundary



Biron - SS Manholes



Biron - SS Lift Station

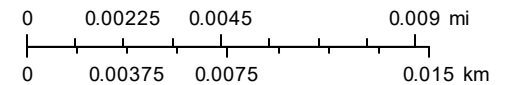


Biron - SS Pressurized Main



Biron - SS Gravity Main

1:282





# **ENGINEERING DEPARTMENT POLICIES AND PROCEDURES**

## **SUBJECT:**

### **Policy for Street Lights**

## **PURPOSE:**

To set policy for adding, modifying, replacing, or installing new lighting facilities.

The purpose of street lighting, and the governance of this policy, pertain strictly to lighting the street right-of-way and in no way is intended to provide security lighting for private property. A request for street lighting, which in the professional opinion of the City Engineer and/or WWLC's Electrical Engineer is for private security purposes, is not provided by the City of Wisconsin Rapids and will be denied.

This policy is effective 4/21/2015.

## **POLICY:**

### **Light Fixture Standards**

- All new lighting fixtures shall be LED

### **Pole Standards**

- Downtown areas to be black decorative poles with banner arms, flower basket arms and festoon outlets.
- Areas with green fiberglass poles will indefinitely remain as such, but will transition to white fiberglass poles in the future.
- Areas with existing wood poles and aerial power lines shall be wood poles.
- Areas with underground electric shall be white fiberglass poles.

### **Street Lighting Design Standards**

These manuals will be consulted when adding, modifying, replacing, or installing new lighting facilities. Design standards provide guidance on recommended practices to facilitate and safeguard vehicular and pedestrian traffic within the street right-of-way.

- RP-8-14 publication from the Illuminating Engineering Society (IES)
- AASHTO Roadway Lighting Design Guide
- City of Wisconsin Rapids Lighting Specifications & Standards (NEW CONSTRUCTION)

### **Requests for Street Lighting**

- Requests that are in accordance with the purpose of this policy shall require Council Approval unless street lighting is budgeted through street reconstruction projects and subsequently approved with the street reconstruction budget.

### **Requests Above Standards**

- Street Lighting requests that are in accordance with the purpose of this policy can be upgraded above the pole standards based upon the following:
  - A requestor for street lights must pay initial installed costs above the standard pole costs. If the standard poles for street lights are already installed, then the requestor(s) would pay the whole cost above standard poles and fixture, plus removal costs of standard poles.

**PROCEDURES:**

1. A request shall be made to the Engineering Department and/or WWLC.
2. An internal review of the location and existing facilities will be made by the Engineering Department and WWLC staff in accordance with this policy and professional judgement.
3. Review the current budget.
4. Review the Capital Improvement Plan to see if the request can be filled in the near future.
5. Review compliance of the request with the Design Standards.
6. Refer item to the Public Works Committee.

POLICY DATE: \_\_\_\_\_SIGNATURE: \_\_\_\_\_

REVIEW DATE: \_\_\_\_\_SIGNATURE: \_\_\_\_\_



## Public Works Committee

**Date of Request:** November 29th, 2023

**Requestor:** Joe Eichsteadt, City Engineer

**Request/Referral:** Review and consider adding yield control on 10<sup>th</sup> Street South at Peach Street.

### **Background information:**

This intersection control was last reviewed in September of 2022. At that time, 13<sup>th</sup> St S and Peach St, a nearby intersection, had a yield sign added.

With the addition of the yield sign at 13<sup>th</sup> St S and Peach St, this resulted in leaving 10<sup>th</sup> St S and Peach St an isolated, uncontrolled intersection. Additionally, recent accident history also adds to warranting yield control at 10<sup>th</sup> St S and Peach St.

Reconsideration of the yield sign was prompted by a resident complaint through SeeClickFix.

*"We moved in Feb of 2023 and I have witnessed 6 people not even attempting to slow down at the unmarked intersection of Peach and 10th, I have almost been T-boned on 3 separate occasions and from my understanding, earlier this year someone actually got T-boned while driving their grandchild to an event. I am looking to add either a stop sign or yield sign as every other intersection on Peach St has one" – SeeClickFix User*

See attached Sign Warrant Summary.

**Options available:** approve or deny.

**Action you are requesting the committee take:** Consider approving the addition of yield control on 10<sup>th</sup> Street South at Peach Street.

**How will the item be financed?** Traffic Control Signage budget

## Peach Street and 10<sup>th</sup> Street South Intersection Study

### Background

#### Location

The intersection of Peach St and 10<sup>th</sup> St S is an uncontrolled intersection of two local roads. The speed limit on both roads is 25mph.

#### Accidents

There have been 5 right angle collisions at the intersection in the past 10 years.

- 2 in 2013
- 1 in 2015
- 1 in 2019
- 1 in 2023

### Study

#### Method

The traffic data for this study was collected using both an automatic traffic counting device and in-person observation. A traffic counting device was installed at the intersection and collected data over a period of two weeks.



Figure 1 Intersection of Peach St and 10<sup>th</sup> St S

#### Observation

The intersection was examined for line-of-sight obstructions within the vision triangle. Vision triangles are areas in the corners of intersections where objects could obstruct a driver's view of cross traffic. These areas should be kept clear of plants or objects between 2 ½ to 10 feet tall. Because Peach St and 10<sup>th</sup> St S are both local roads the legs of the vision triangle extend 20 feet out from the intersection on both streets.

One minor vision obstruction was found at the intersection. In the southeast corner there is a sapling with branches lower than 10 feet, see Figure 3.

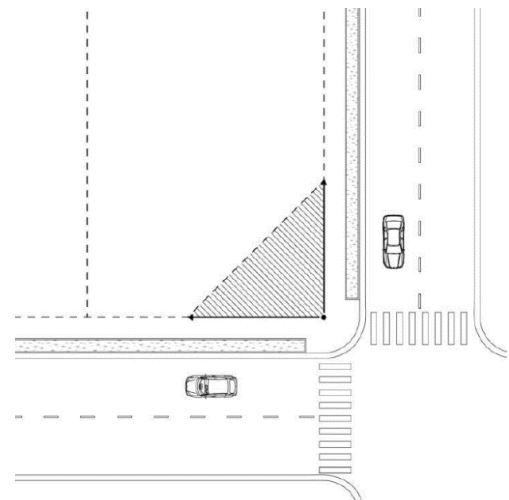


Figure 2 Vision Triangle





*Figure 3 10th St Northbound, with sapling obstructing vision on the right*



*Figure 4 10th St Southbound*



*Figure 5 Peach St Eastbound*



*Figure 6 Peach St Westbound*

## Results

An automatic traffic monitoring device collected data on both vehicle volumes and vehicle speeds. Traffic counts are reported as the number of vehicles per hour averaged over the eight-hour interval with the highest traffic volume for the day. Vehicle speeds are reported as the 85<sup>th</sup> percentile speed which is the speed the fastest 15% of vehicles exceeded.

*Table 1 Traffic Count*

Traffic Count (Vehicles Per Day)	
Peach Street	173
10 <sup>th</sup> Street South	140

*Table 2 Traffic Speed*

85 <sup>th</sup> Percentile Speed (mph)	
Peach Street	26
10 <sup>th</sup> Street South	25

## Recommendation

The City of Wisconsin Rapids has adopted a policy to determine when additional traffic signage is necessary (Table 3). This policy is based on the Manual of Uniform Traffic Control Devices (MUTCD), a book of traffic standards created by the Federal Highway Administration, further supplemented by the WisDOT and adopted by the City of Wisconsin Rapids in Chapter 340. Based on these standards and the data collected from the study, **yield signs may be appropriate for this intersection.**

- Traffic volume on the minor road is less than 1000 vehicles per day.
- Visibility issues can be remedied by removing trees.
- Two right angle accidents occurred within 12 months in 2013.
- Both Streets are classified as local.



Table 3 Wisconsin Rapids' Policy on Installation of Regulatory Signs

		NO CONTROL	YIELD SIGN	STOP SIGN, 2-WAY	STOP SIGN, 4-WAY	TRAFFIC SIGNAL
1	Avg Vol/hr for 8 hour period	< 100 veh/hr	> 100 veh/hr	> 250 veh/hr	300/hr - Major	Meets warrants of the MUTCD
					200/hr - minor	
	Volume for 24 hours	< 1000 veh	> 1000 veh	≥ 3000 veh	500/hr - both 5000 balanced volumes	
2	Visibility	No obstructions in the vision triangle	Minor obstructions in the vision triangle	vision triangle obstructed	blind intersection	
3	right angle accident in a 12 month period	no accidents	≥ 2	≥ 3	≥ 5	≥ 5
4	Street classification	local/local	local/local, thru/local, collector/local	thru street collector/local, arterial/local	collector/arterial, arterial/arterial	arterial/arterial
5	Other factors		No nearby uncontrolled intersections	T-intersection		meets pedestrian and school crossing
**Two of five items are required to be considered for increasing the regulatory signage						
** Other considerations that need to be considered are Section 2B.04 of the MUTCD and Intersection Control pg 654 AASHTO 2004						

**Yield signs to be considered.**

ORDINANCE NO. MC\_\_\_\_\_

A GENERAL ORDINANCE OF THE CITY OF WISCONSIN RAPIDS AMENDING SECTION 340.004 OF THE MUNICIPAL CODE. SAID ORDINANCE LISTS THE LOCATION OF YIELD SIGNS.

NOW, THEREFORE, THE COMMON COUNCIL OF THE CITY OF WISCONSIN RAPIDS DOES ORDAIN AS FOLLOWS:

SECTION I      Section 340.004(3)(a) of the Wisconsin Rapids Municipal Code shall hereby be amended to read as follows:

340.004 THROUGH STREETS AND CONTROLLED INTERSECTIONS

(3)      Yield Signs to be Erected. The city traffic engineer is authorized to erect yield right-of-way signs conforming to the Wisconsin Official traffic Control Device Manual at the following intersections on highways in the exclusive jurisdiction of the city. The provisions of Section 349.07(7)(a), Wisconsin State Statutes, shall apply.

(a)      Yield Right of Way. In the interest of public safety, and with approval of the Wisconsin Rapids Common Council, yield right-of-way signs shall be erected so that traffic on the first-named streets shall yield right-of-way to traffic approaching on the streets being entered at the following locations.

(10b)    10<sup>th</sup> Street South at its intersection with Peach Street

SECTION II      All ordinances, or parts of ordinances, in conflict herewith are hereby repealed.

SECTION III      This ordinance shall take effect upon passage and publication.

---

Shane E. Blaser, Mayor

---

Jennifer M. Gossick, City Clerk

PASSED:  
APPROVED:  
PUBLISHED:

PUBLIC WORKS COMMITTEE REFERRAL LIST:

2023 (11/28/2023)

1. Request from Alderperson Tom Rayome to discuss the future of 8<sup>th</sup> St S. (2016)
2. Request from Rayome for Quiet Zones for trains on the east side of city.
3. ~~Consider possible solutions to possible lack of sufficient overnight and extended parking for semi-trucks within the City.~~
4. Review the Change Order policy and consider updates.
5. Consider a request to allow residential properties additional garbage bins for an additional fee.